



Southwest Region Planning Commission



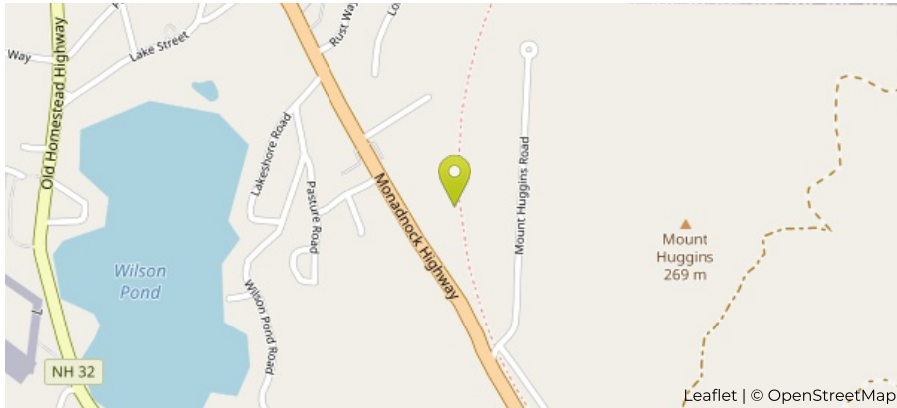
Henry Underwood

06/02/2021

Cheshire Rail Trail North of Mt Huggins Dr

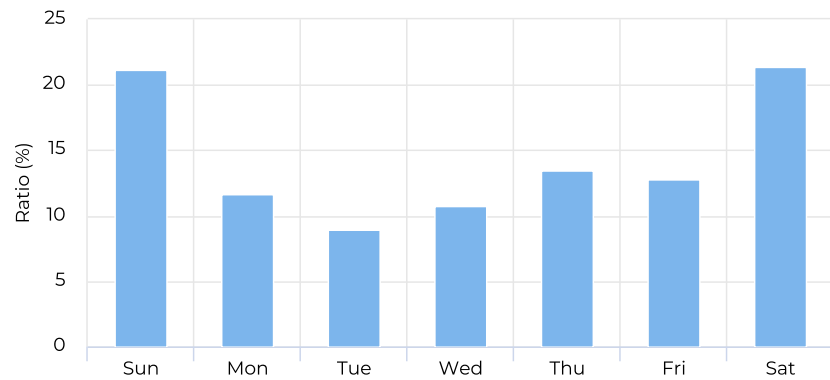
July 21, 2017 → May 28, 2018

Location



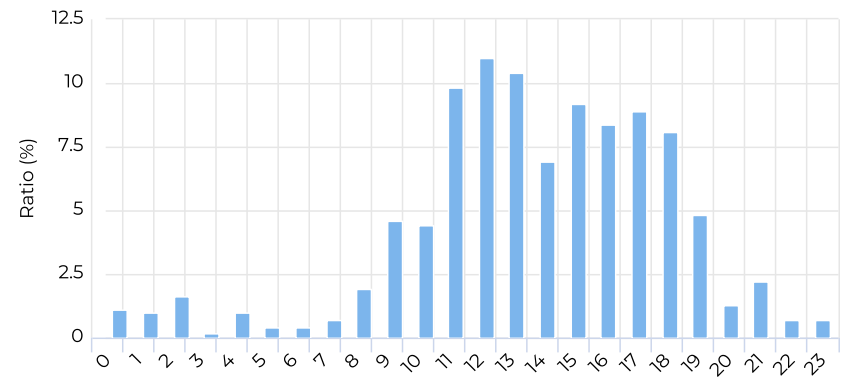
Daily Ratio Chart

📅 Whole Period



Hourly Ratio Chart

📅 Whole Period ▼ 5/7

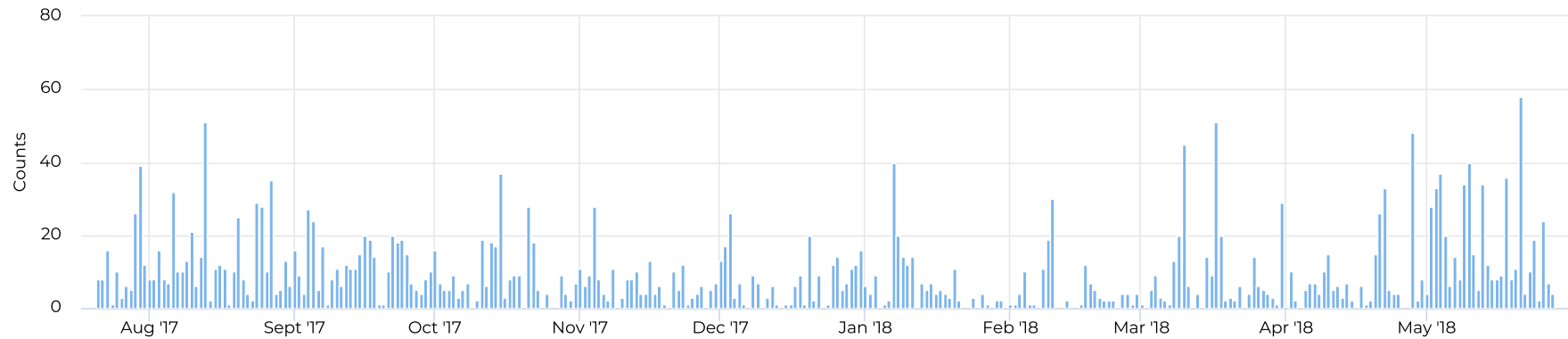


Cheshire Rail Trail North of Mt Huggins Dr

July 21, 2017 → May 28, 2018

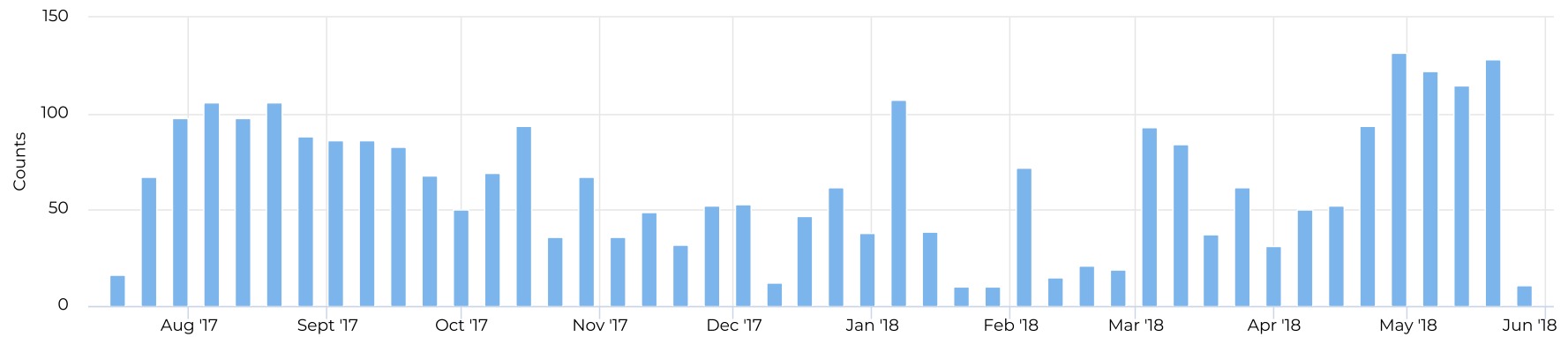
Time Series

Whole Period



Time Series

Whole Period

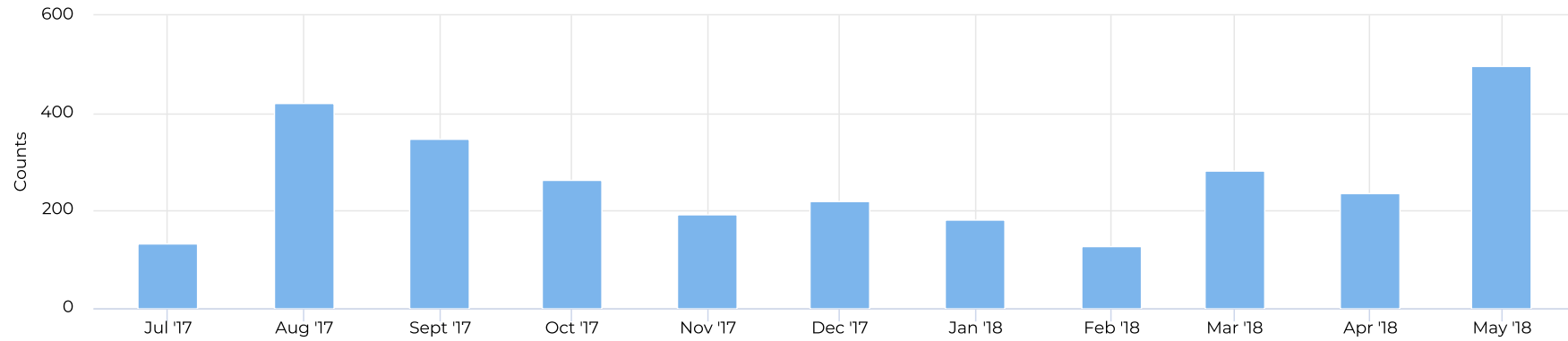


Cheshire Rail Trail North of Mt Huggins Dr

July 21, 2017 → May 28, 2018

Time Series

📅 Whole Period



Cheshire Rail Trail North of Mt Huggins Dr

July 21, 2017 → May 28, 2018

Key Figures Summary

Site	Total	Average	Peak Count	Peak Period
Cheshire Rail Trail North of Mt Huggins Dr	2,903	9	58	Mon May 21, 2018
Pedestrians/Cyclists SB	1,607	5	35	Mon May 21, 2018
Pedestrians/Cyclists NB	1,296	4	25	Sun Aug 13, 2017