

DATE: June 28, 2019
TO: Plan for Ashuelot Rail Trail Project Advisory Committee
FROM: SWRPC Staff
RE: Existing Conditions Assessment – Rail Trail Base Mapping

Background and Data Sources

To increase general awareness about the location of the Ashuelot Rail Trail SWRPC created a variety of printed and online maps:

1. The [Plan for Ashuelot Rail Trail: A Pilot Project Locator Map](https://arcg.is/WvXvD) (<https://arcg.is/WvXvD>) was created to show the project area as well as facilitate responses to questions in the project's online resident survey. The map is featured on the [project webpage](http://www.swrpc.org/plan-for-ashuelot-rail-trail) (<http://www.swrpc.org/plan-for-ashuelot-rail-trail>) and allows users to view the trail alongside aerial photography as well as print and share map views of the trail using social media platforms.
2. Four community-specific poster-sized "Overview" maps were created to assist the Project Advisory Committee, Open House participants and others at various meetings. The maps ([Keene](#), [Swanzey](#), [Winchester](#), and [Hinsdale](#)) are available on the [project webpage](http://www.swrpc.org/plan-for-ashuelot-rail-trail) (<http://www.swrpc.org/plan-for-ashuelot-rail-trail>). An [Ashuelot Rail Trail Challenges and Opportunities](https://arcg.is/evvun) (<https://arcg.is/evvun>) online interactive map was created to display feedback received at Project Advisory Committee meetings and at the Open House event.

The following data was created or compiled in GIS format for use during the planning project and beyond. (see the attached map book):

- 2015 aerial imagery provided by NH GRANIT.
- Project Advisory Committee/Open House feedback.
- Rail trail bridge locations and descriptions.
- Ashuelot Rail Trail and other rail trail centerlines provided by the New Hampshire Department of Transportation (NHDOT) Bureau of Planning and Community Assistance.
- Highway centerlines provided by the NHDOT Bureau of Planning and Community Assistance.
- New Hampshire trails provided by NH GRANIT.
- The New Hampshire conservation/public lands layer provided by NH GRANIT.
- Waterbodies, rivers, streams, and wetlands published in the United States Geological Survey National Hydrography Dataset.

Recommendations

- Collect new and/or additional data on formal and informal parking locations, trail access points (beyond road intersections), snowmobile facilities, railroad-related structures, food and water, and bathrooms.

ASHUELOT RAIL TRAIL

AERIAL IMAGERY MAP BOOK



Legend

Project Advisory Committee/Open House Feedback

- Challenge
- Opportunity
- Populated Places
- ▲ Summit
- ▬ Municipal Boundary
- Ashuelot Rail Trail Bridges
- Ashuelot Rail Trail
- Other Rail Trail

Highway

by Legislative Classification

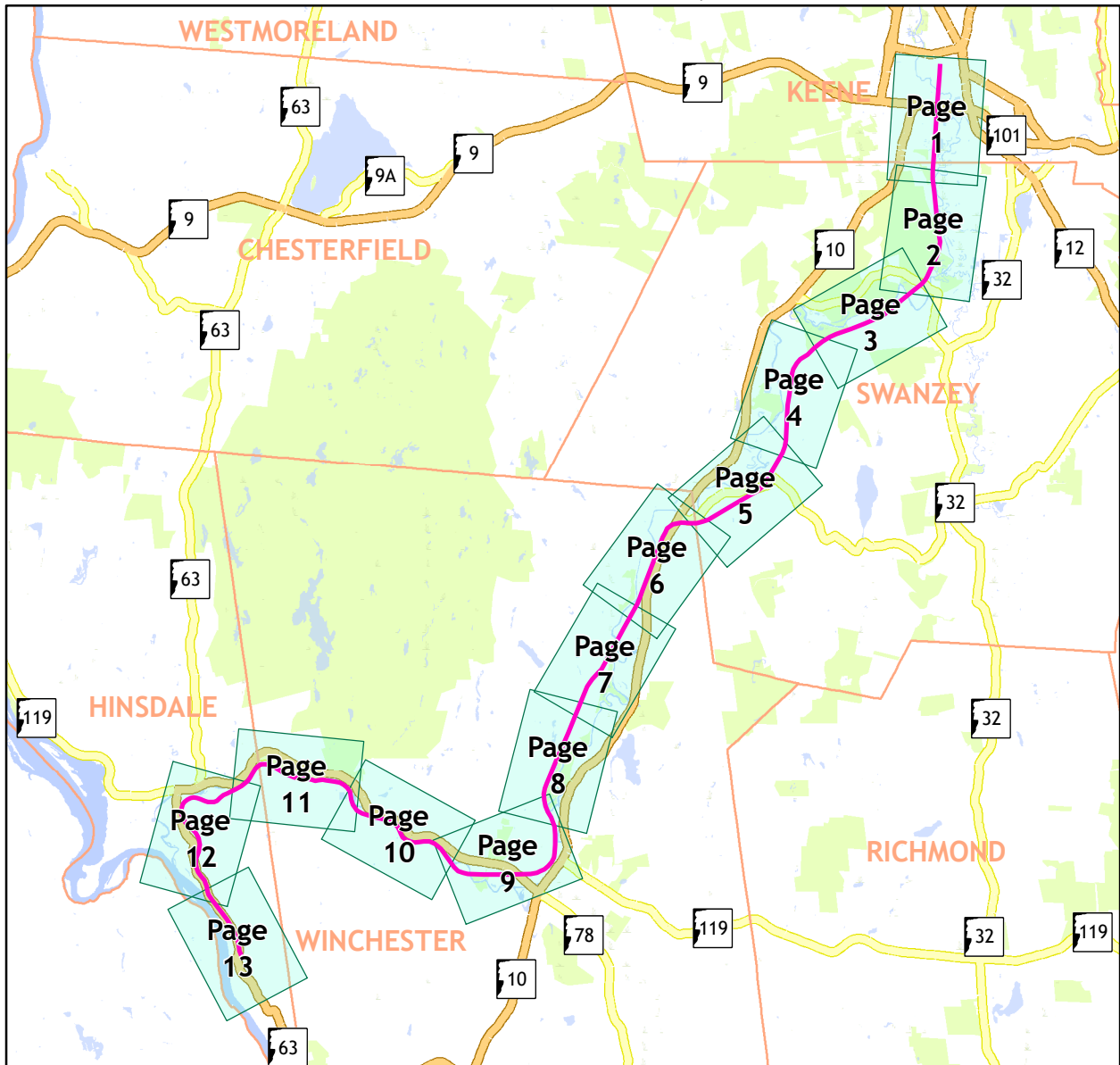
- Class I or IV
- Class II
- Class III
- Class V
- = Class VI
- Private
- Recreational Trails in New Hampshire
- New Hampshire Conservation/Public Lands
- Tax Parcel Boundary

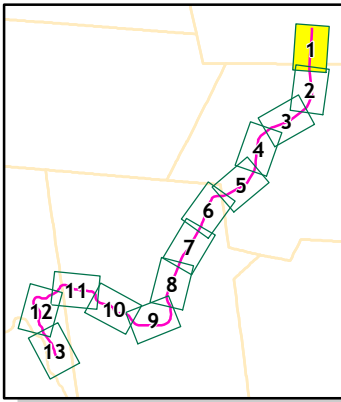
River or Stream

- ##### Type
- Perennial
 - - - Intermittent

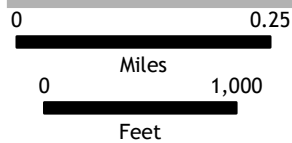
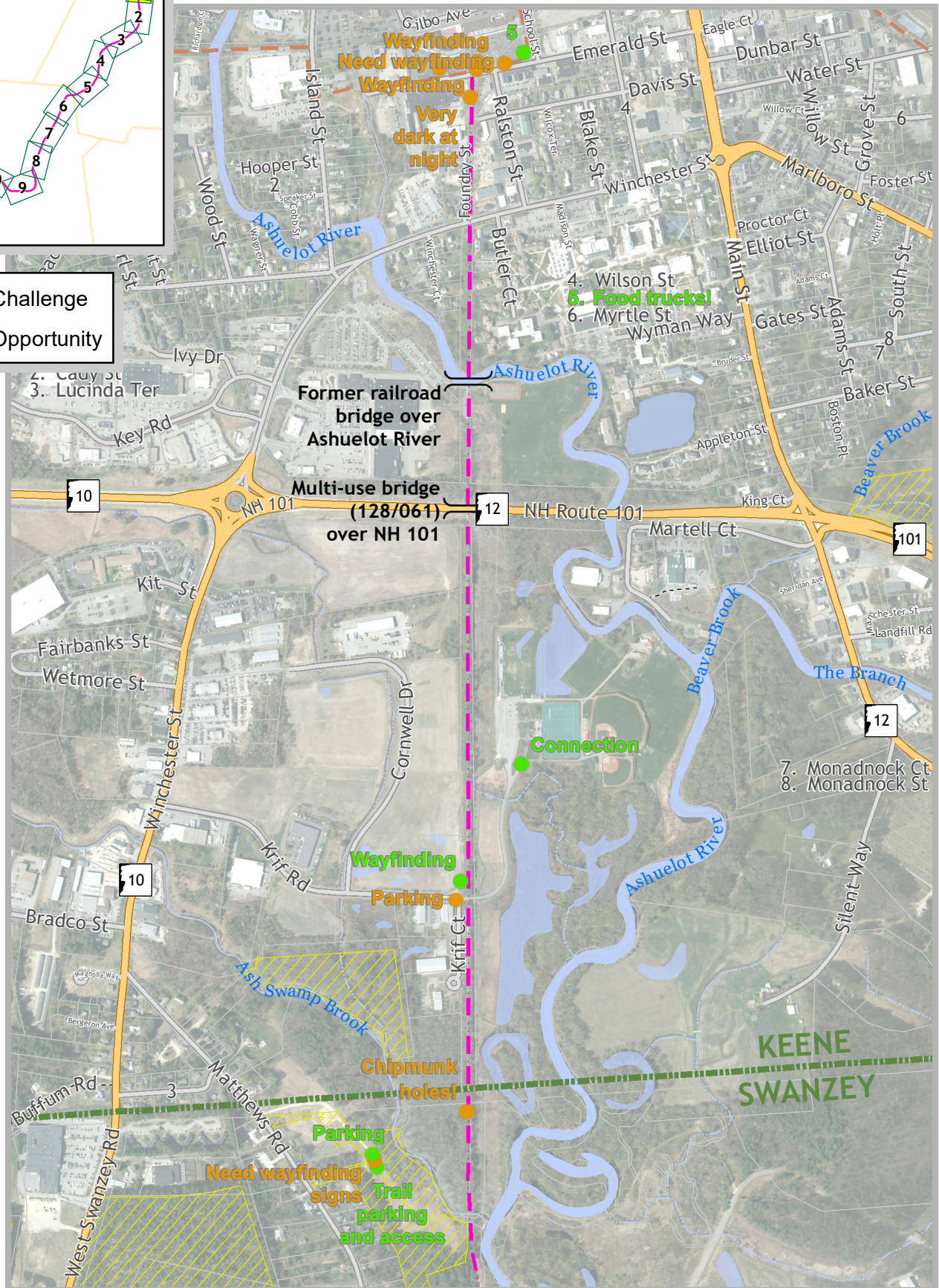
Water Body

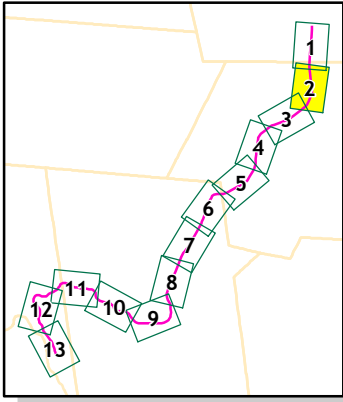
- ##### Type
- Swamp or Marsh
 - Lake or Pond
 - Reservoir



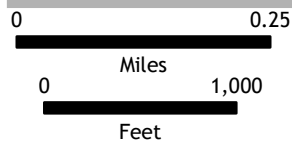
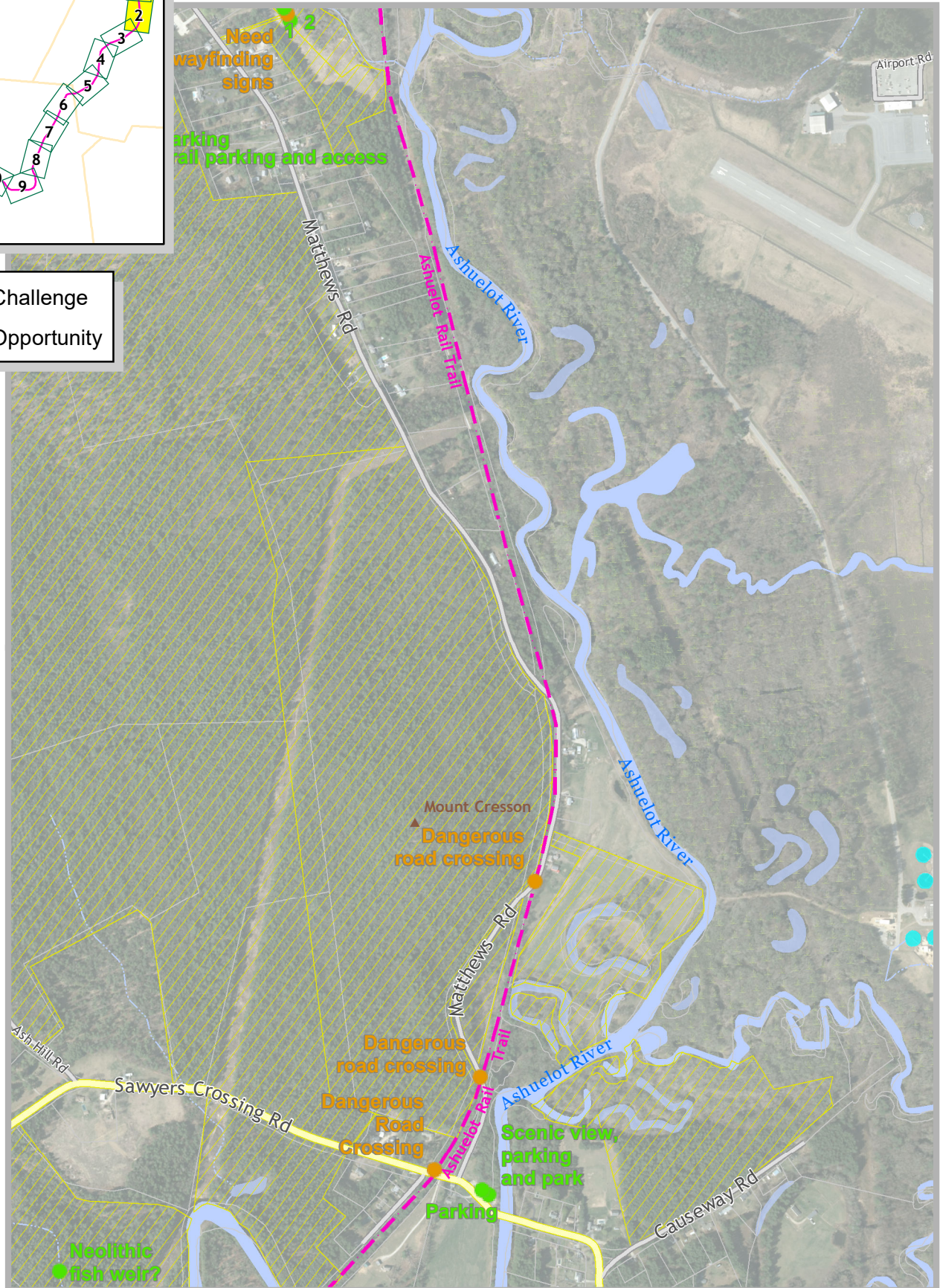


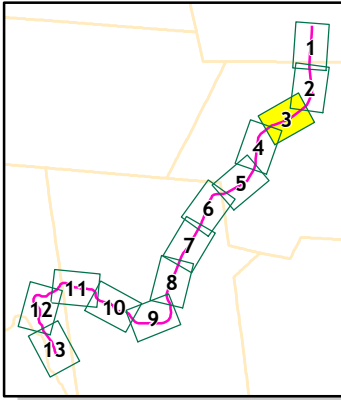
- Challenge
- Opportunity



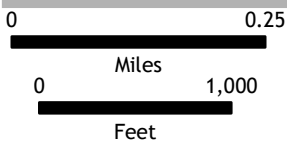
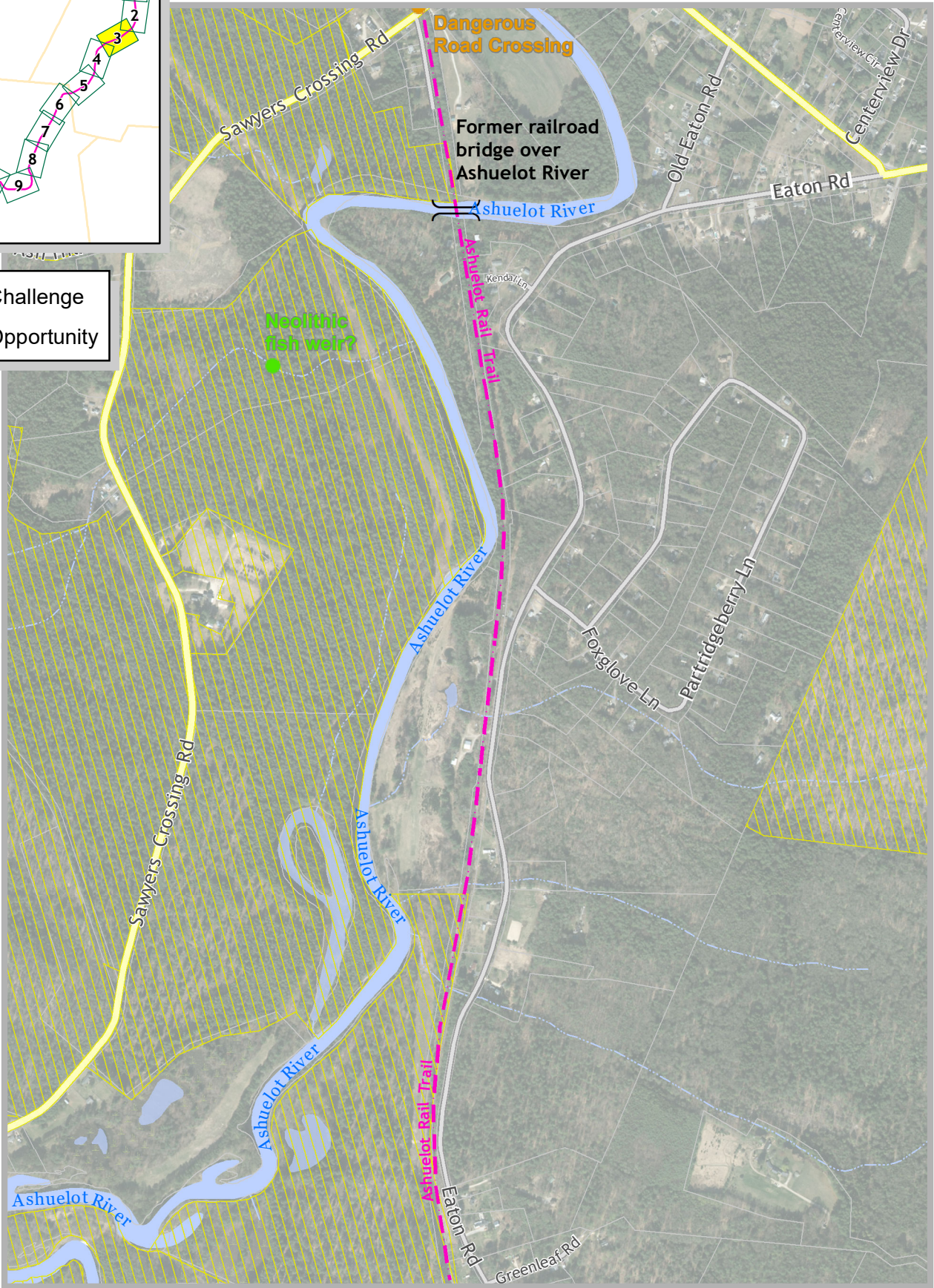


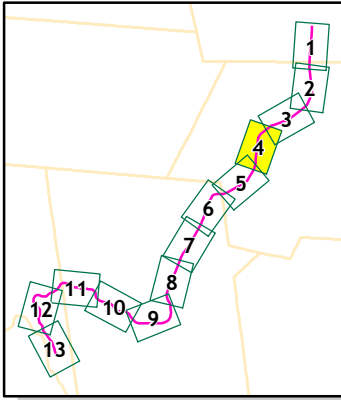
- Challenge
- Opportunity



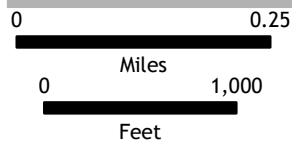
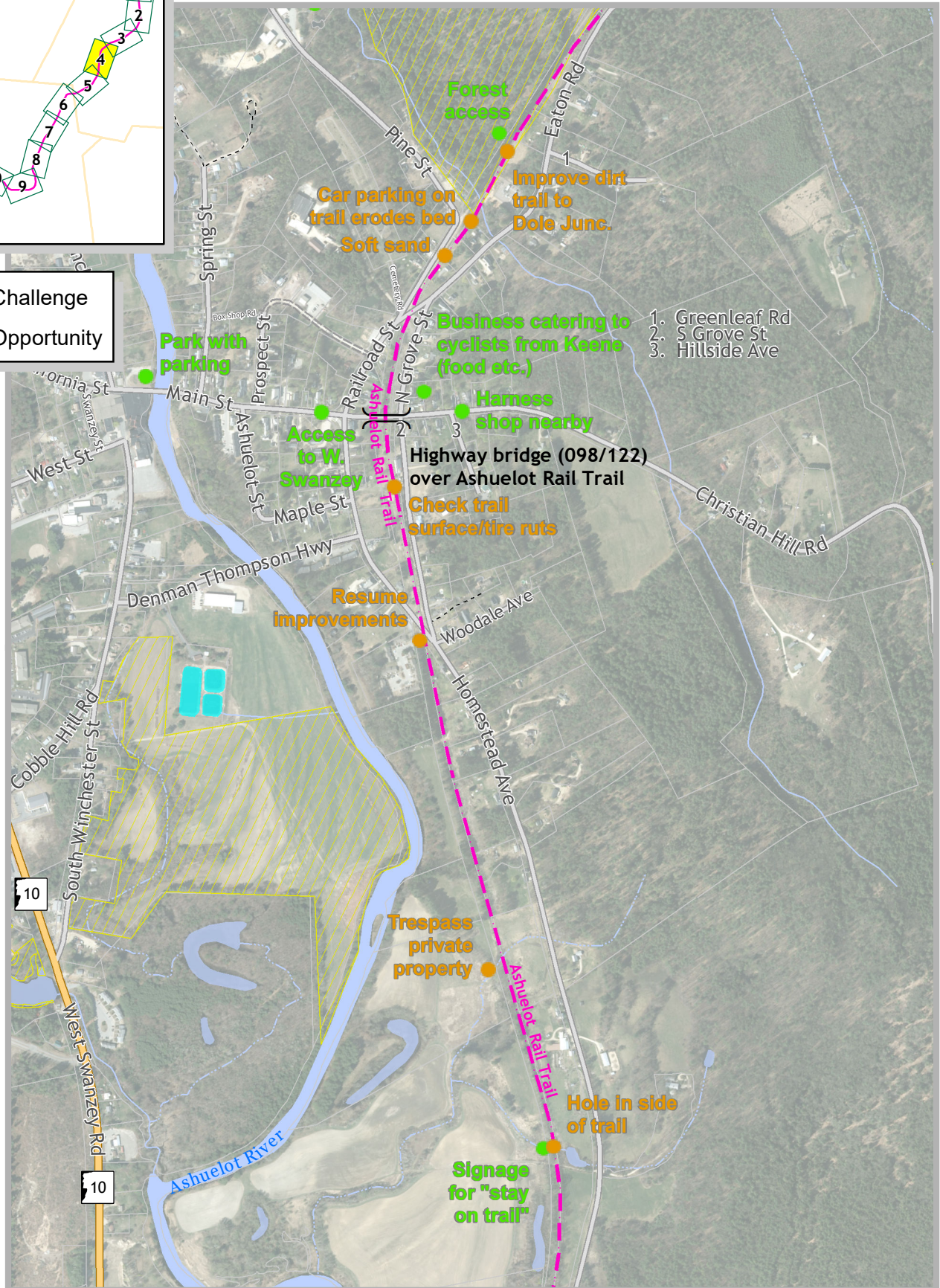


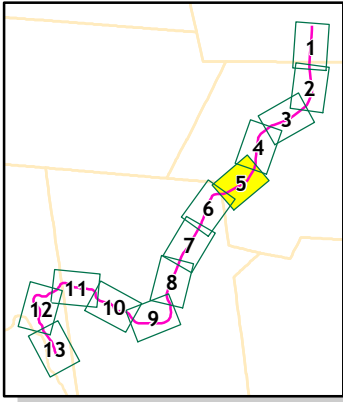
- Challenge
- Opportunity



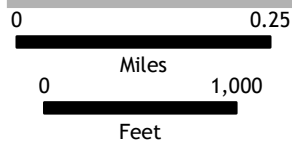
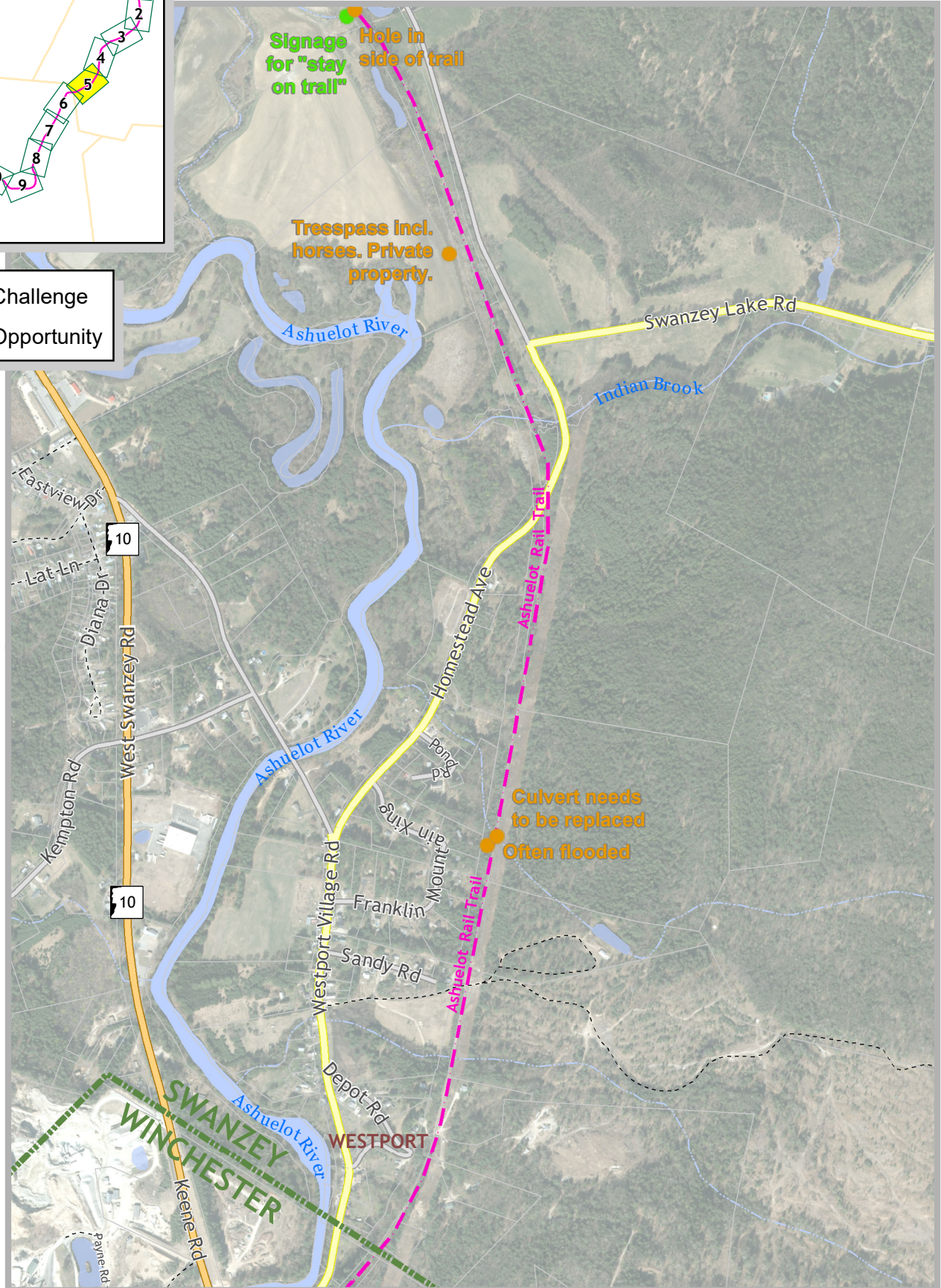


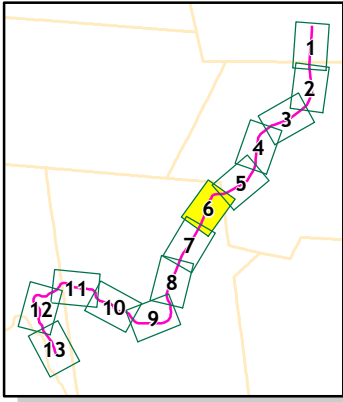
- Challenge
- Opportunity



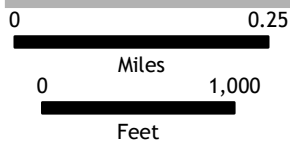
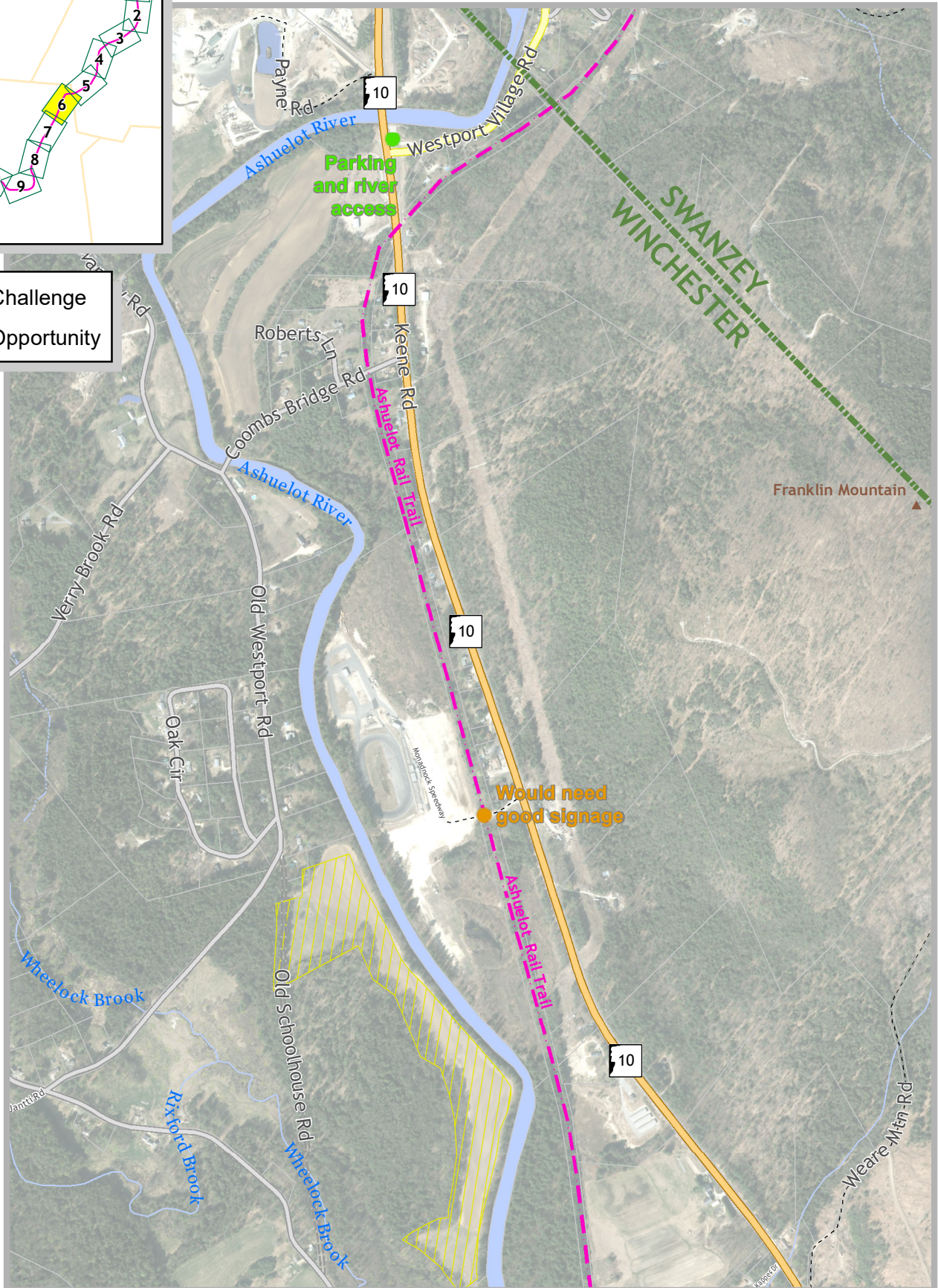


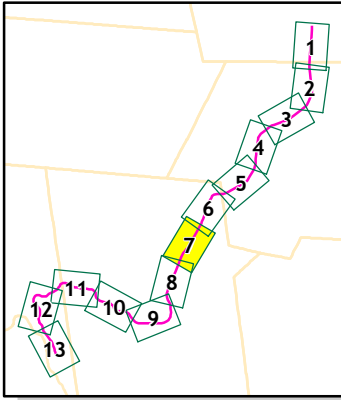
- Challenge
- Opportunity



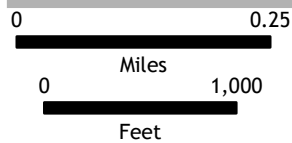
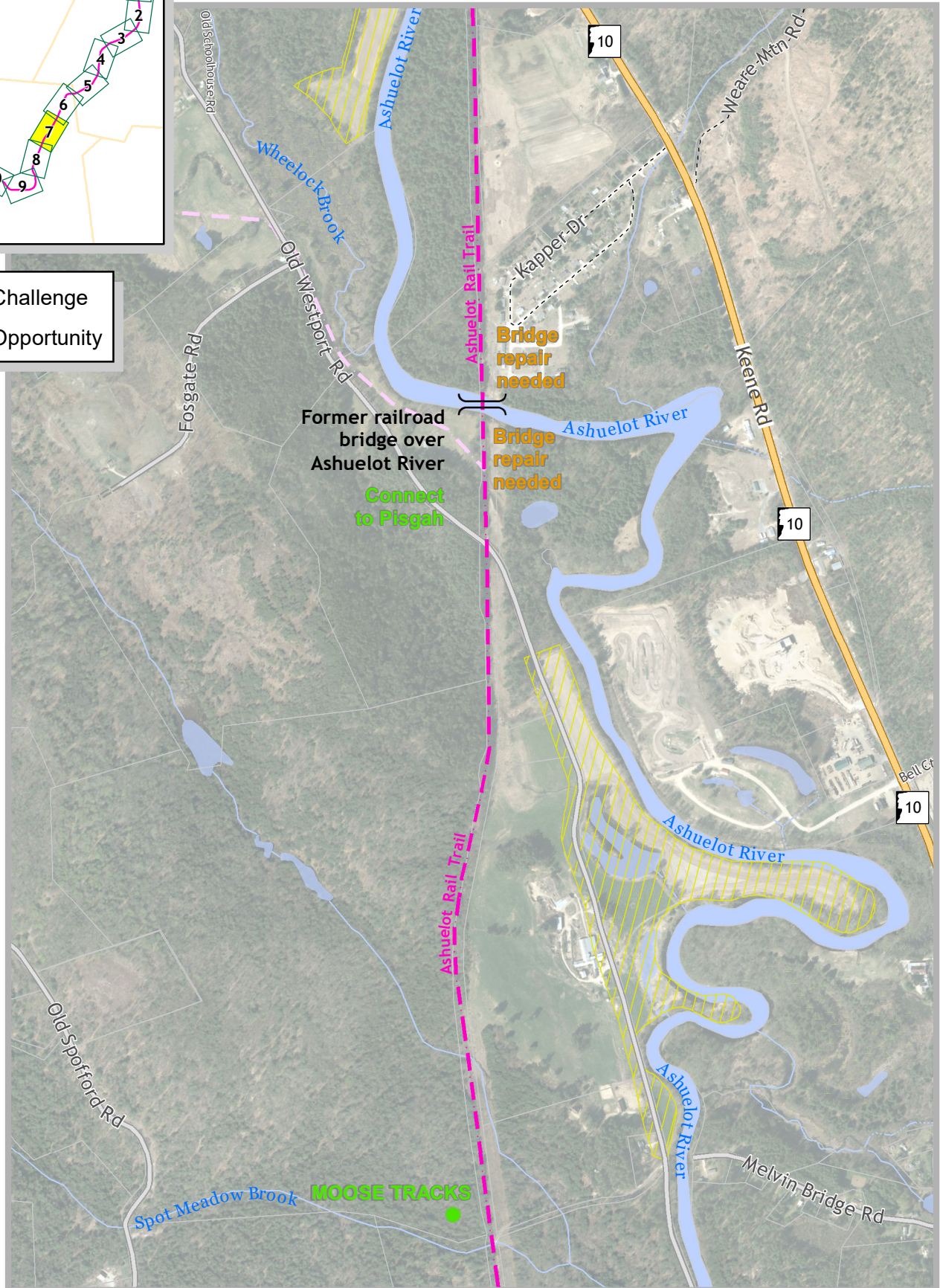


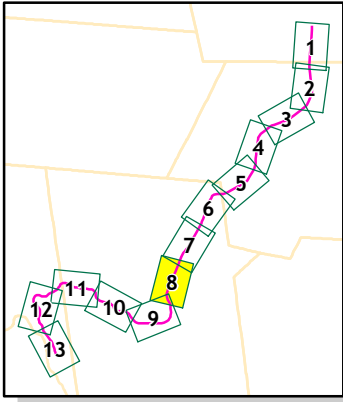
- Challenge
- Opportunity



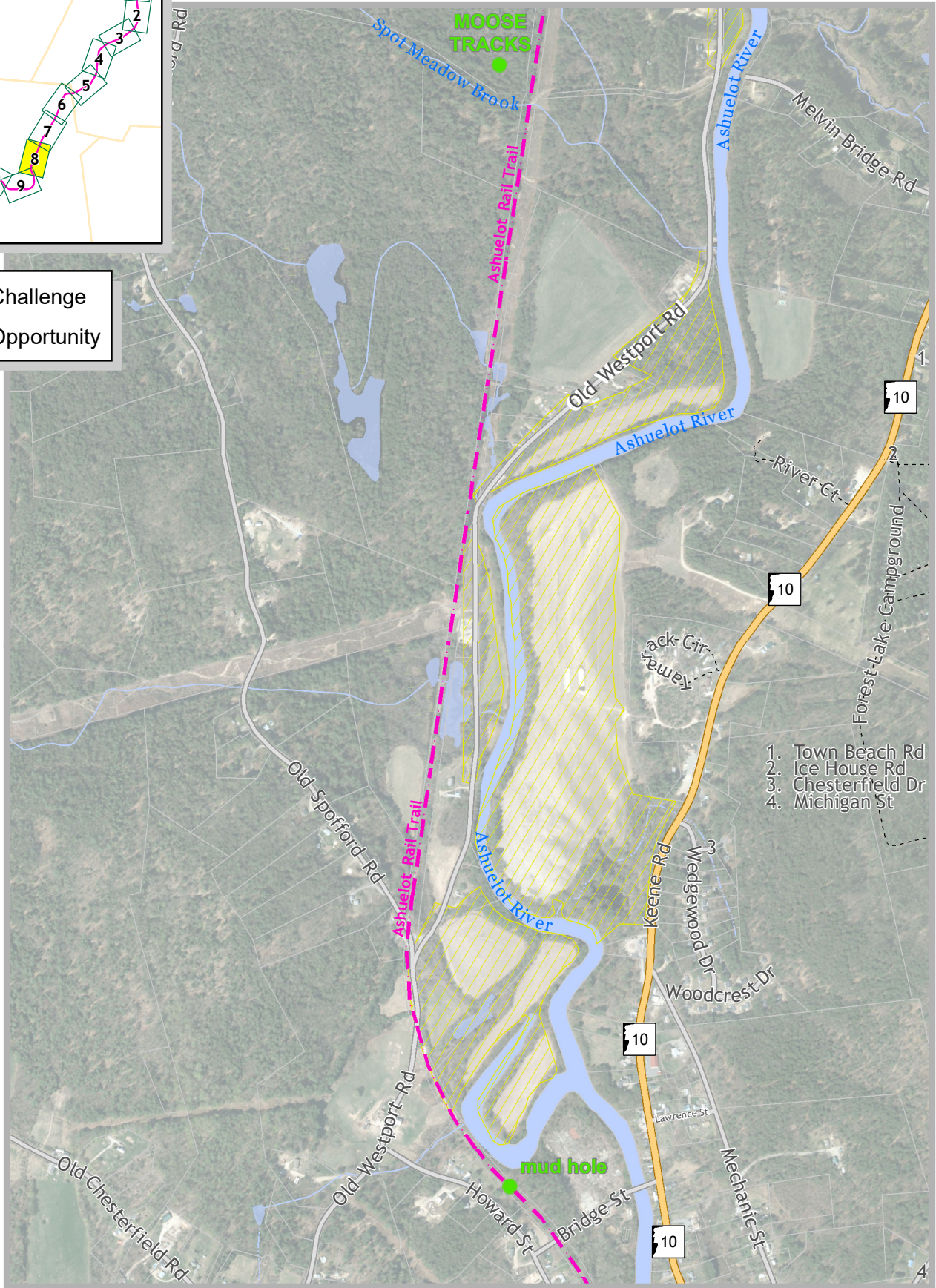


- Challenge
- Opportunity

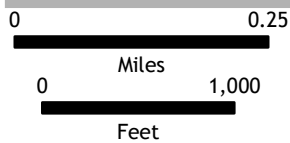


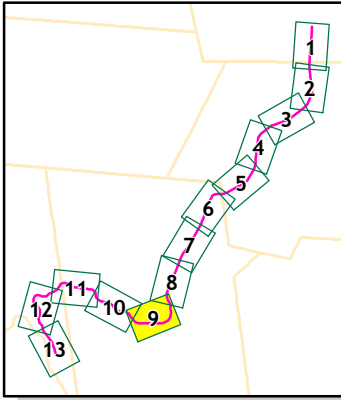


- Challenge
- Opportunity



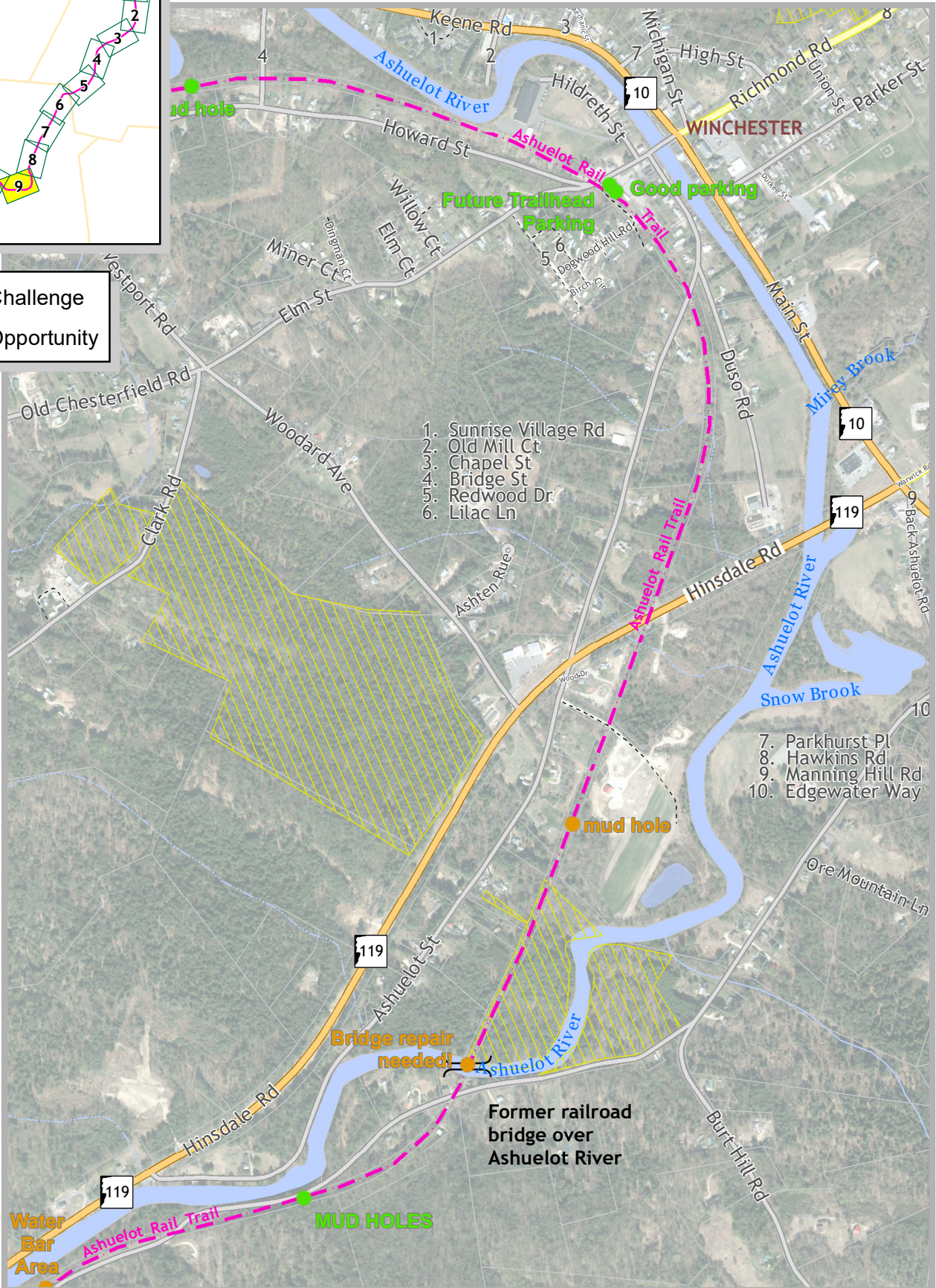
1. Town Beach Rd
2. Ice House Rd
3. Chesterfield Dr
4. Michigan St





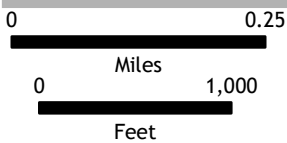
Challenge (Orange circle)

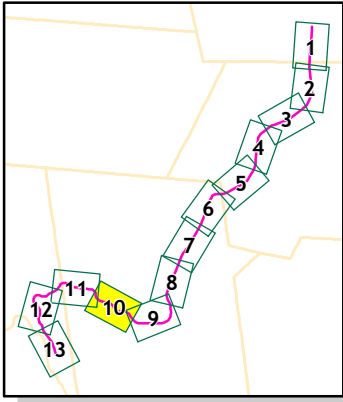
Opportunity (Green circle)



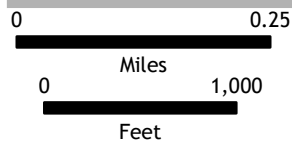
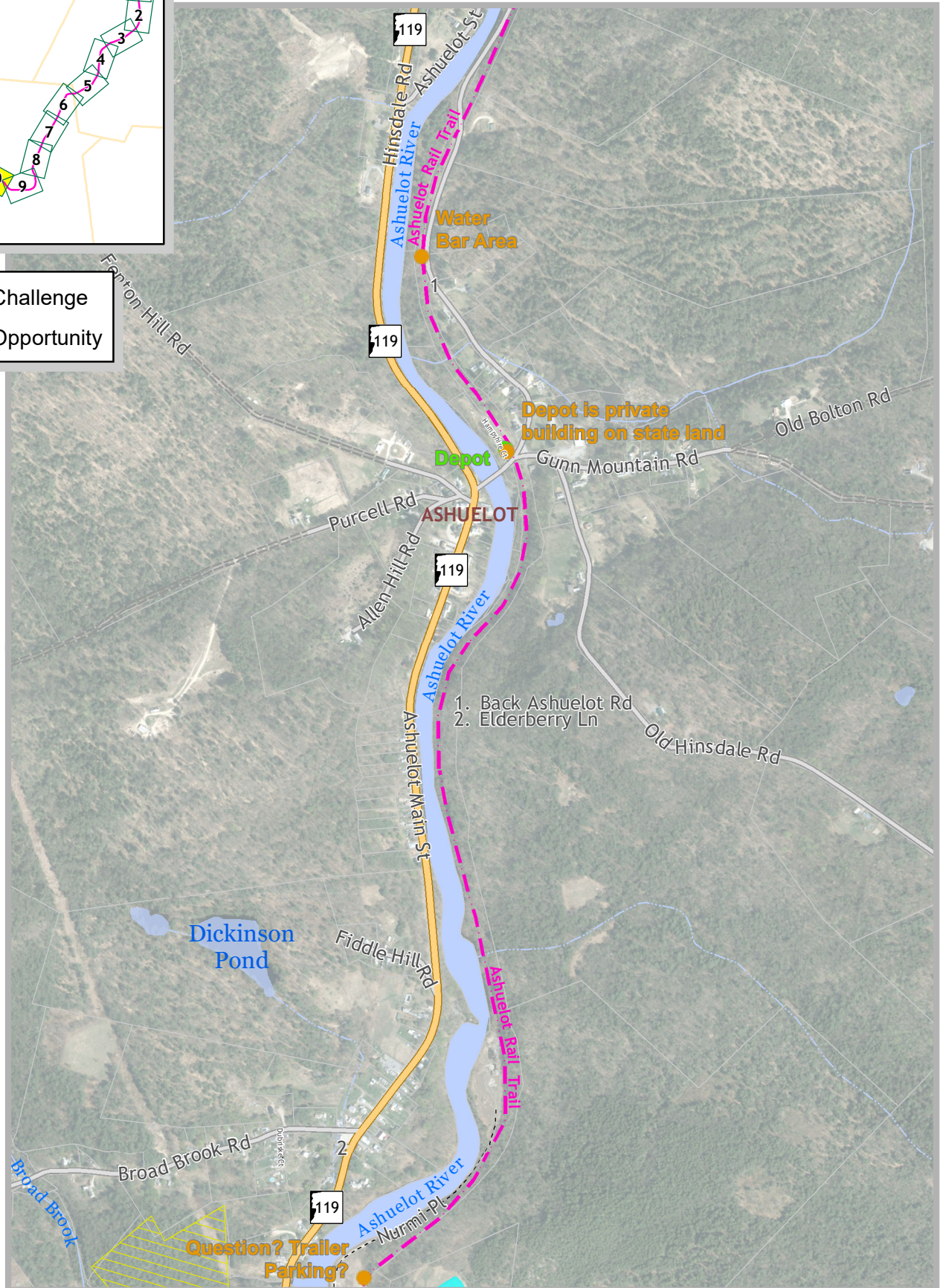
1. Sunrise Village Rd
2. Old Mill Ct
3. Chapel St
4. Bridge St
5. Redwood Dr
6. Lilac Ln

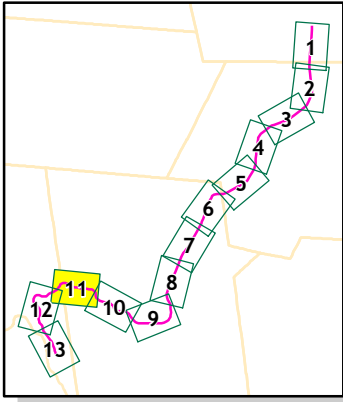
7. Parkhurst Pl
8. Hawkins Rd
9. Manning Hill Rd
10. Edgewater Way



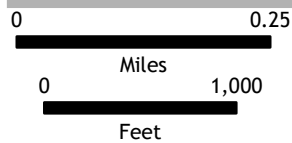
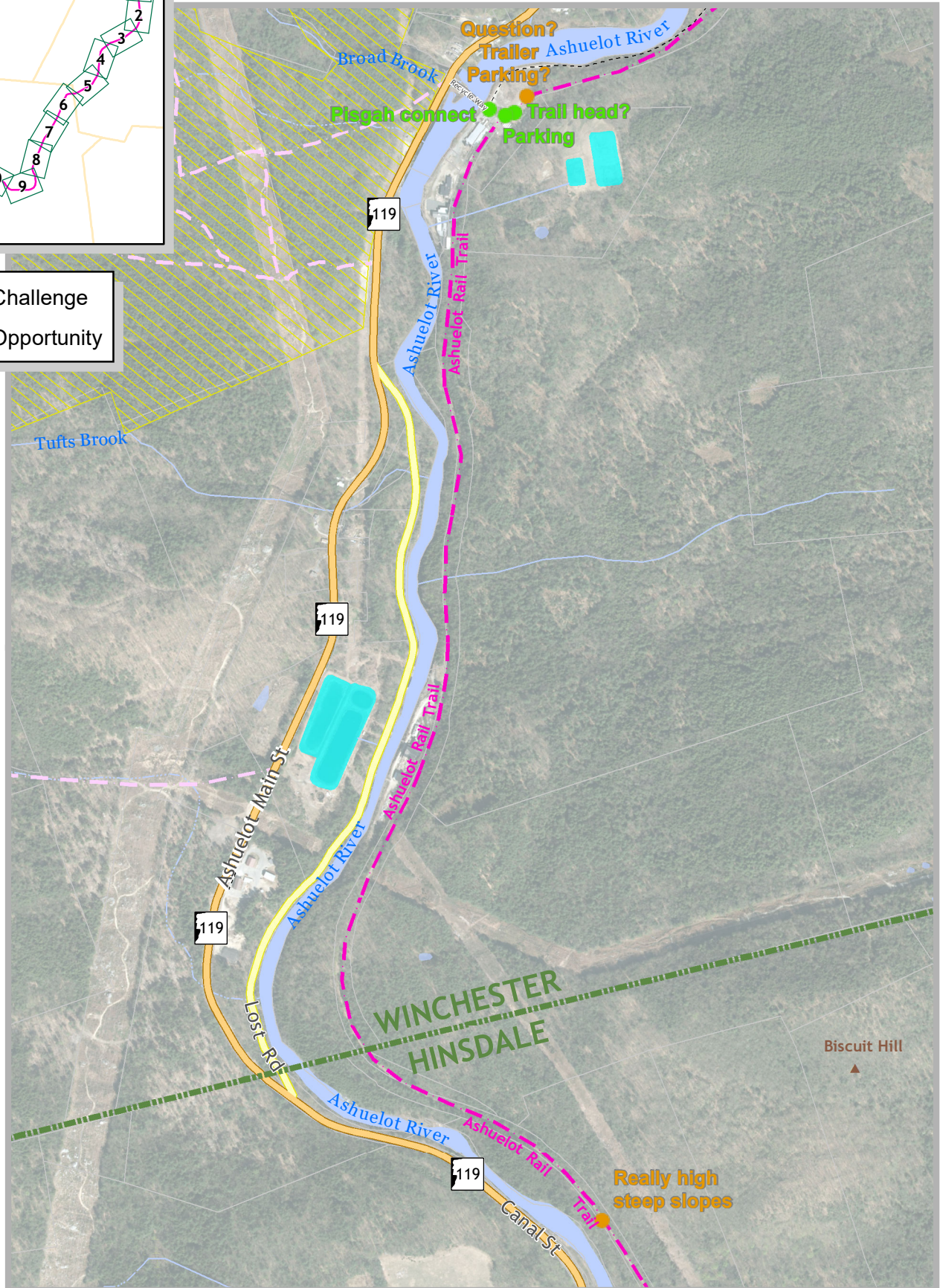


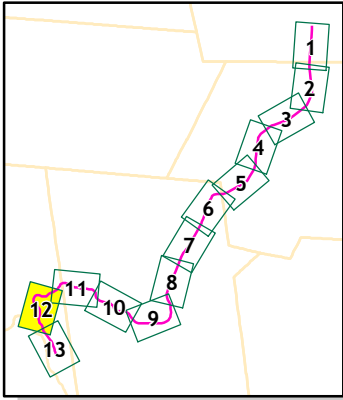
● Challenge
● Opportunity



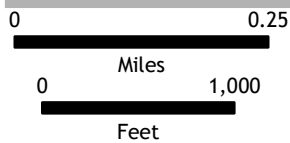
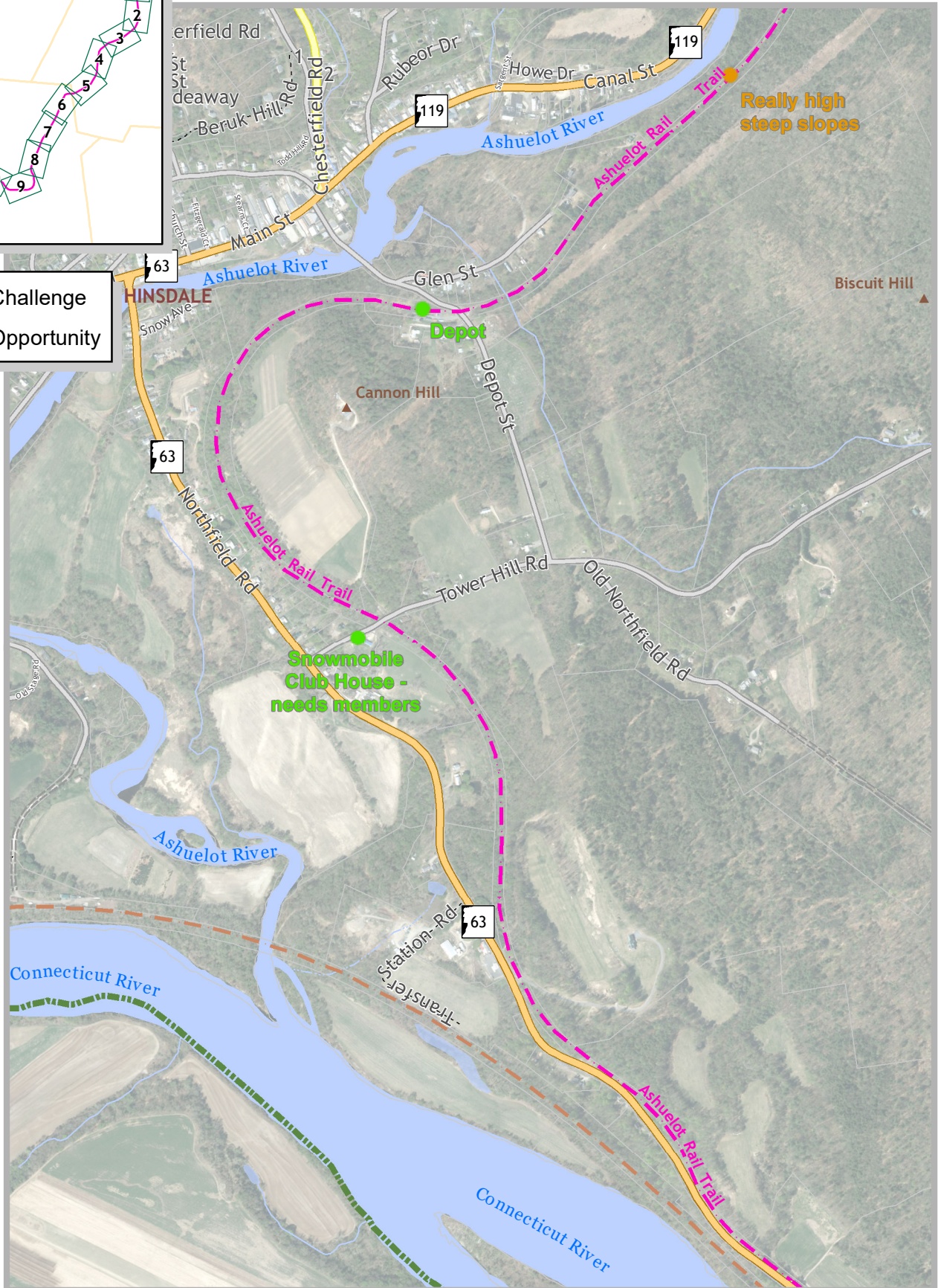


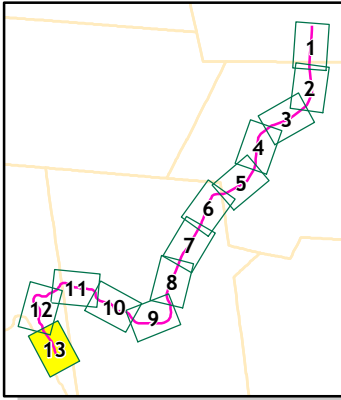
- Challenge
- Opportunity





- Challenge
- Opportunity





- Challenge
- Opportunity

