



# SWRPC

Southwest Region Planning Commission

[ABOUT](#)[COMMUNITY & ECONOMIC DEV.](#)[REGIONAL DATA & GIS](#)[LOCAL PLANNING](#)[HAZARD MITIGATION](#)[NATURAL RESOURCES](#)[TRANSPORTATION](#)[BROWNFIELDS](#)

## WHAT'S NEW AT SWRPC?

# [www.swrpc.org/mf2](http://www.swrpc.org/mf2)

### [Age-Focused Planning Initiative](#)

- [Take the Survey](#) -

### [Plan for Ashuelot Rail Trail: A Pilot Project](#)

- [Take the Survey](#) -

### [An Introduction to Interstate Natural Gas Pipeline Proposals in New Hampshire](#)

### [Job Postings](#)

[Planner](#)

[Planning Technician](#)

### [Highlights Newsletter](#)

[FCC Mobility Fund Phase II Challenge Process](#)

[Projects Selected for Engineering Review](#)

[CDBG Project Completed](#)

[Hinsdale-Brattleboro Bridge Project Advisory Committee](#)

## FCC Mobility Fund Phase II Challenge Process

### Overview

Are there areas of your community which lack mobile voice and high-speed internet coverage? The Federal Communications Commission (FCC) Mobility Fund Phase II will make up to \$4.53 billion available over 10 years to expand 4G Long Term Evolution (LTE) service, primarily in rural areas. As part of this opportunity, the FCC established a Challenge Process to provide feedback on a map of eligible areas. Interested parties, including local governments have an opportunity to challenge an initial determination that an area is ineligible for support. This opportunity closes in late-November of this year. For further information on the Challenge Process, please see the documents linked via the [FCC Mobility Fund Phase II website](#). Specific inquiries to the FCC can be e-mailed to [mf2challengeprocess@fcc.gov](mailto:mf2challengeprocess@fcc.gov). In New Hampshire, the Public Utilities Commission (PUC) is helping to coordinate participation in the Challenge Process.

### Important Links

[New Hampshire Public Utilities Commission Mobility Fund II Challenge Information](#)

- [Call for Volunteers](#)
- [Meetings and Events](#)
- [F.A.Q.](#)

[FCC Mobility Fund Phase II](#)

- [Challenge Process](#)

**Plan for Ashuelot Rail Trail: A Pilot Project**

- [Take the Survey](#) -

**An Introduction to Interstate Natural Gas Pipeline Proposals in New Hampshire**

**Job Postings**

[Planner](#)

[Planning Technician](#)

**Highlights Newsletter**

[FCC Mobility Fund Phase II Challenge Process](#)

[Projects Selected for Engineering Review](#)

[CDBG Project Completed](#)

[Hinsdale-Brattleboro Bridge Project Advisory Committee Update](#)

[Transportation Alternatives Program](#)

[MAST 2019 Focus Area Survey](#)

[Highlights Archive](#)

**SWRPC MEETINGS**

Feb. 4	<p><b>Transportation Advisory Committee (TAC)</b> will meet at 2:00 p.m. at 37 Ashuelot Street. For more information, please contact <a href="#">J. B. Mack</a> of SWRPC staff.</p> <p>The <b>SWRPC Board of</b></p>
--------	--

## Overview

Are there areas of your community which lack mobile voice and high-speed internet coverage? The Federal Communications Commission (FCC) Mobility Fund Phase II will make up to \$4.53 billion available over 10 years to expand 4G Long Term Evolution (LTE) service, primarily in rural areas. As part of this opportunity, the FCC established a Challenge Process to provide feedback on a map of eligible areas. Interested parties, including local governments have an opportunity to challenge an initial determination that an area is ineligible for support. This opportunity closes in late-Novmber of this year. For further information on the Challenge Process, please see the documents linked via the [FCC Mobility Fund Phase II website](#). Specific inquiries to the FCC can be e-mailed to [mf2challengeprocess@fcc.gov](mailto:mf2challengeprocess@fcc.gov). In New Hampshire, the Public Utilities Commission (PUC) is helping to coordinate participation in the Challenge Process.

## Important Links

[New Hampshire Public Utilities Commission Mobility Fund II Challenge Information](#)

- o [Call for Volunteers](#)
- o [Meetings and Events](#)
- o [F.A.Q.](#)

[FCC Mobility Fund Phase II](#)

- o [Challenge Process](#)
- o [Data](#)
- o [Documents](#)
- o [Education & Outreach](#)
- o [Related Links](#)

## Presentations

<https://arcg.is/uKOn4>

[Tribal Governments"](#)

[ctive" Presentation](#)

## Maps



[Monadnock Region Speed Test Interactive Map \(SWRPC\)](#)

[Monadnock Region Speed Test Map Poster \(SWRPC\)](#)

[FCC Initial Eligible Areas Map](#)

[Monadnock Region Grid Map \(courtesy NH PUC\)](#)



**FCC Mobility Fund Phase II**  
Monadnock Region Speed Test Points

Legend Layers Basemap gallery Details Share Print

**Legend**

**Municipal Boundary**



**One Square Kilometer Grid Cell**



**AT&T**

**Download Speed (Mbps)**

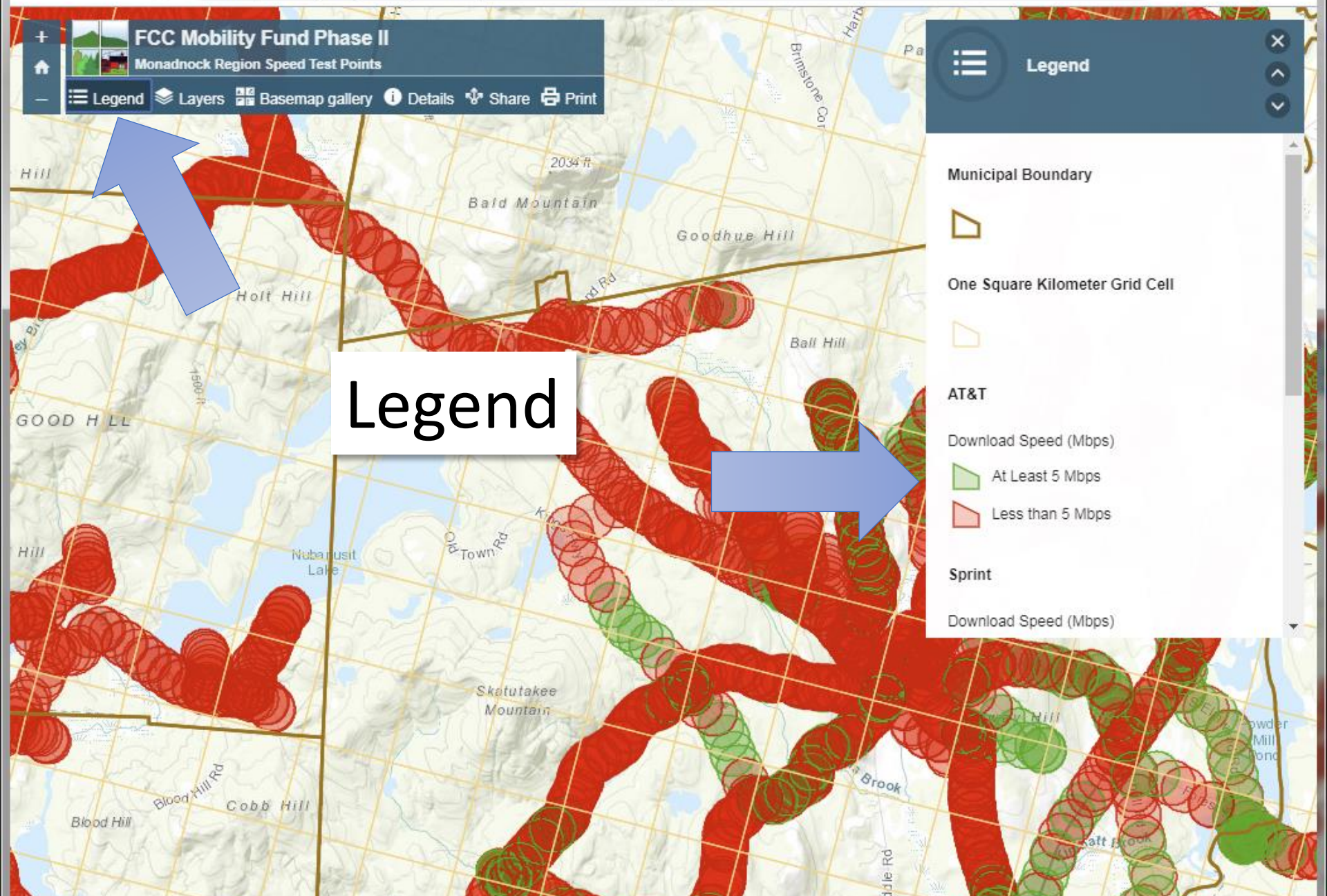
At Least 5 Mbps

Less than 5 Mbps

**Sprint**

**Download Speed (Mbps)**

Legend





**FCC Mobility Fund Phase II**  
Monadnock Region Speed Test Points

Legend Layers Basemap gallery Details Share Print

**Share**

Share this map

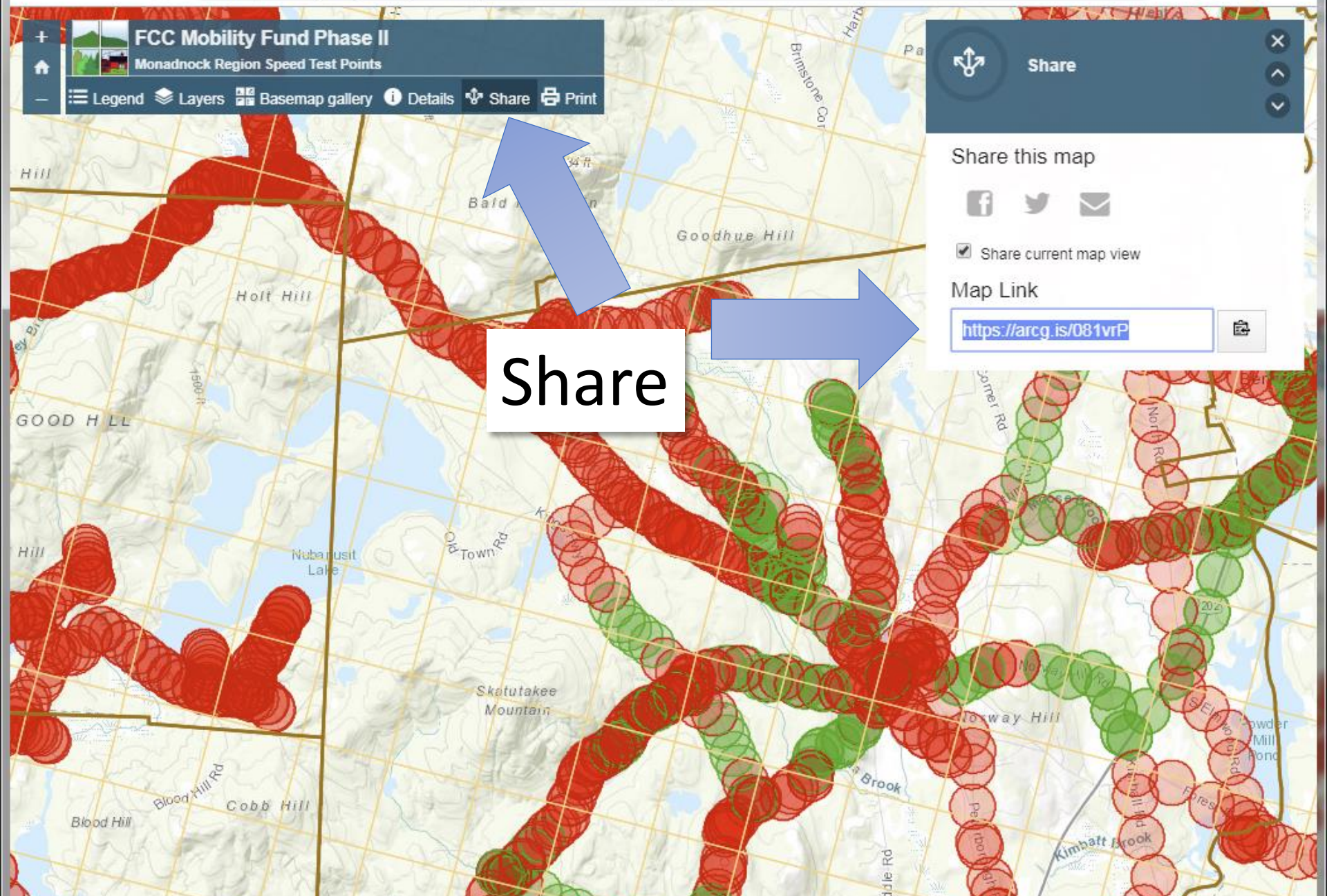


Share current map view

Map Link

<https://arcg.is/081vrP>

Share





**FCC Mobility Fund Phase II**  
Monadnock Region Speed Test Points

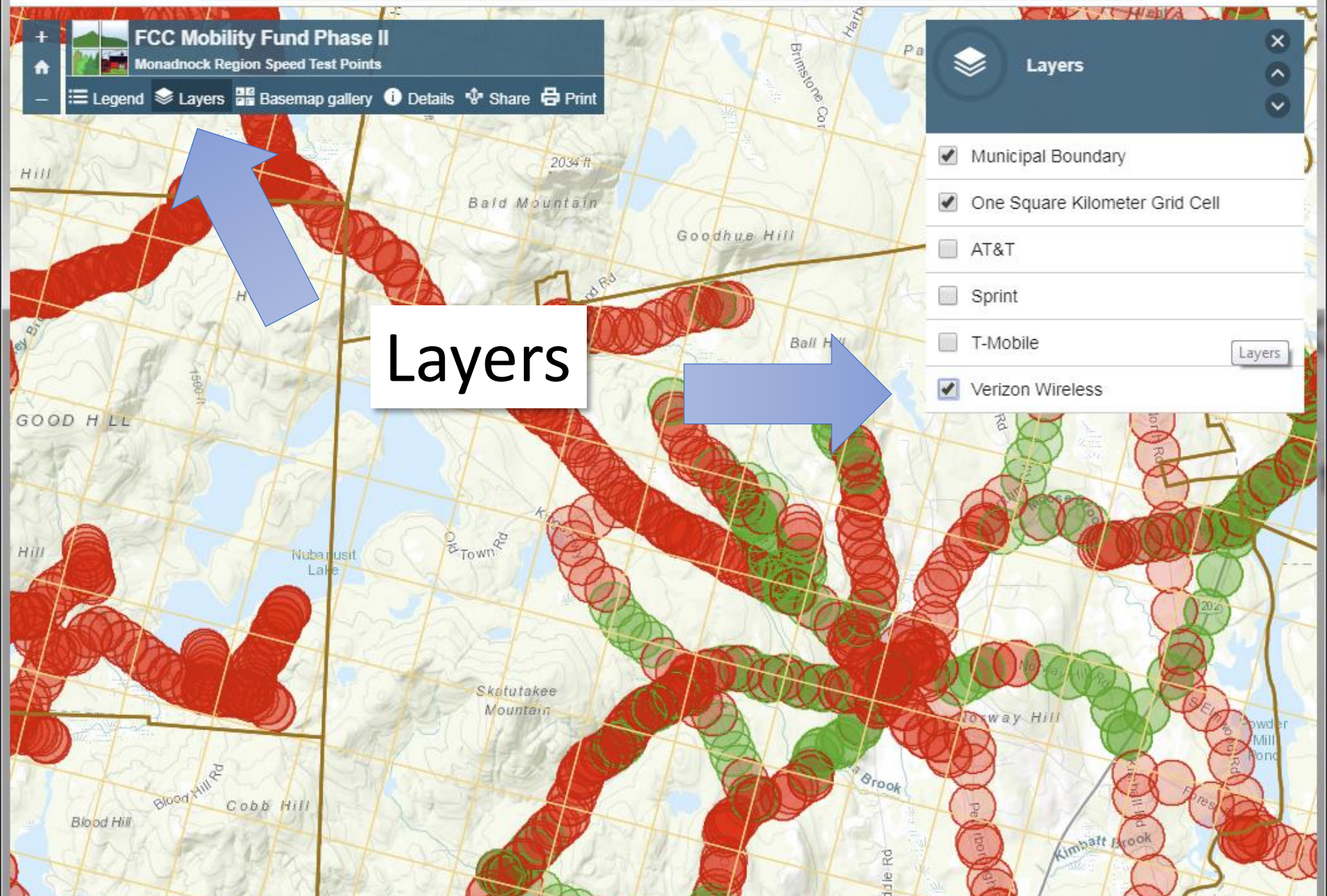
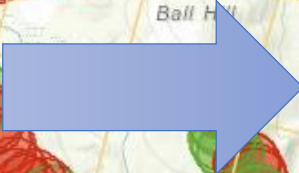
Legend Layers Basemap gallery Details Share Print

**Layers**

- Municipal Boundary
- One Square Kilometer Grid Cell
- AT&T
- Sprint
- T-Mobile
- Verizon Wireless

Layers

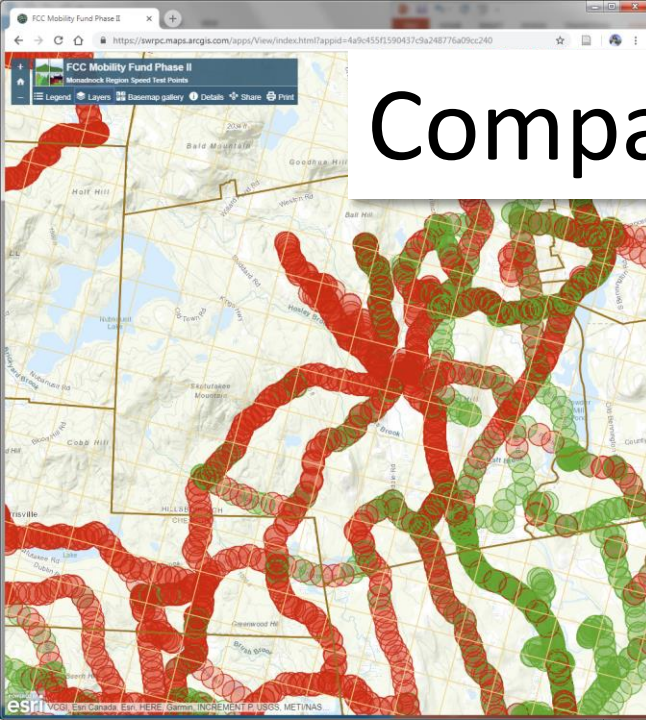
Layers



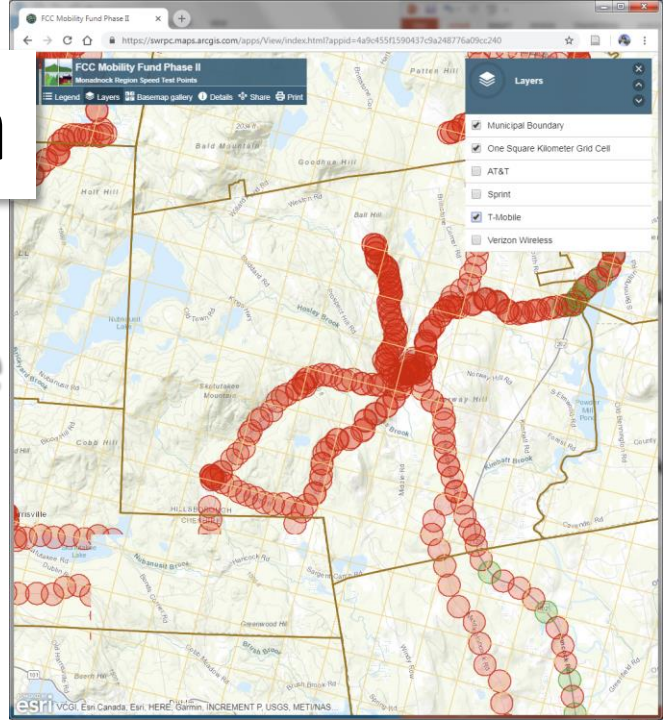


# Compare Data

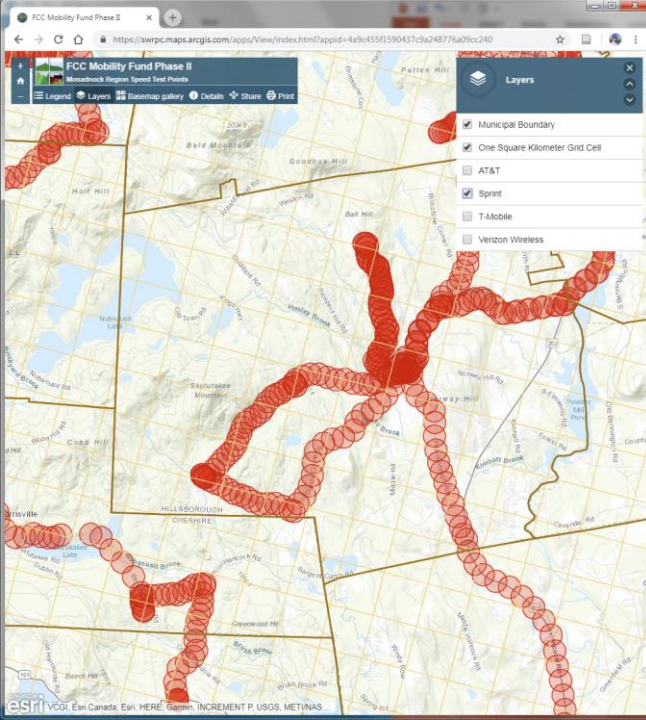
**AT&T**



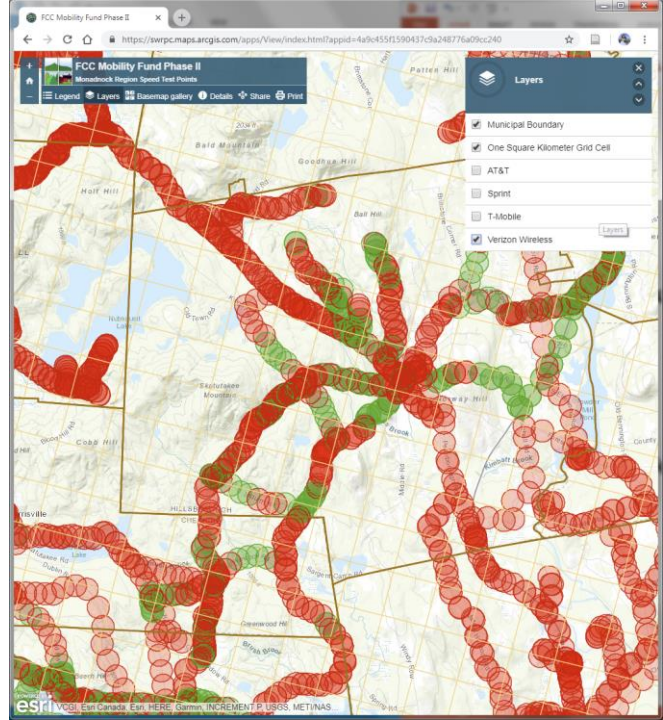
**T-Mobile**



**Sprint**



**Verizon**







**FCC Mobility Fund Phase II**  
Monadnock Region Speed Test Points

Legend Layers Basemap gallery Details Share Print

**Layers**


- Municipal Boundary
- One Square Kilometer Grid Cell
- AT&T
- Sprint
- T-Mobile

Select 

(1 of 2)  

**AT&T**

Latitude	42.98
Longitude	-71.97
Provider Name	AT&T
Signal Strength	-108
Download Speed (Mbps)	6.84
Latency (ms)	79
Municipality	Hancock

 Zoom to



# SWRPC

Southwest Region Planning Commission

- ABOUT
  - COMMUNITY & ECONOMIC DEV.
  - REGIONAL DATA & GIS
  - LOCAL PLANNING
  - HAZARD MITIGATION
  - NATURAL RESOURCES
- TRANSPORTATION
  - BROWNFIELDS

## WHAT'S NEW AT SWRPC?

**Age-Focused Planning Initiative**  
 - [Take the Survey](#) -

**Plan for Ashuelot Rail Trail: A Pilot Project**  
 - [Take the Survey](#) -

**An Introduction to Interstate Natural Gas Pipeline Proposals in New Hampshire**

**Job Postings**  
[Planner](#)  
[Planning Technician](#)

**Highlights Newsletter**  
[FCC Mobility Fund Phase II Challenge Process](#)  
[Projects Selected for Engineering Review](#)  
[CDBG Project Completed](#)  
[Hinsdale-Brattleboro Bridge Project Advisory Committee](#)

[www.swrpc.org/mf2](http://www.swrpc.org/mf2)

## FCC Mobility Fund Phase II Challenge Process

### Overview

Are there areas of your community which lack mobile voice and high-speed internet coverage? The Federal Communications Commission (FCC) Mobility Fund Phase II will make up to \$4.53 billion available over 10 years to expand 4G Long Term Evolution (LTE) service, primarily in rural areas. As part of this opportunity, the FCC established a Challenge Process to provide feedback on a map of eligible areas. Interested parties, including local governments have an opportunity to challenge an initial determination that an area is ineligible for support. This opportunity closes in late-November of this year. For further information on the Challenge Process, please see the documents linked via the [FCC Mobility Fund Phase II website](#). Specific inquiries to the FCC can be e-mailed to [mf2challengeprocess@fcc.gov](mailto:mf2challengeprocess@fcc.gov). In New Hampshire, the Public Utilities Commission (PUC) is helping to coordinate participation in the Challenge Process.

### Important Links

[New Hampshire Public Utilities Commission Mobility Fund II Challenge Information](#)

- o [Call for Volunteers](#)
- o [Meetings and Events](#)
- o [F.A.Q.](#)

[FCC Mobility Fund Phase II](#)

- o [Challenge Process](#)

