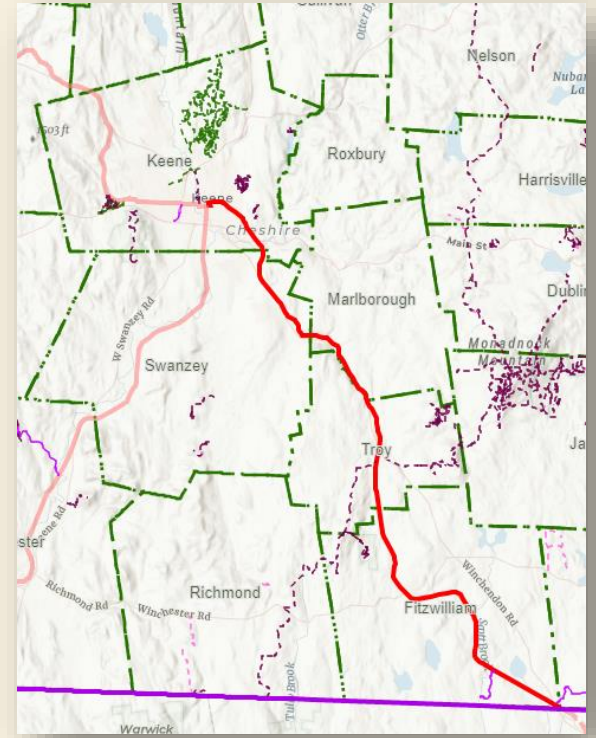


CHESHIRE RAIL TRAIL SOUTH PLANNING PROJECT

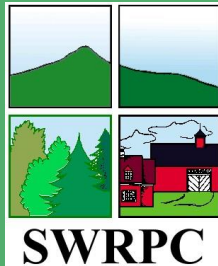


www.swrpc.org/cheshire-rail-trail-south

WORKING GROUP
MEETING #1

12/1/20

4:00 P.M.

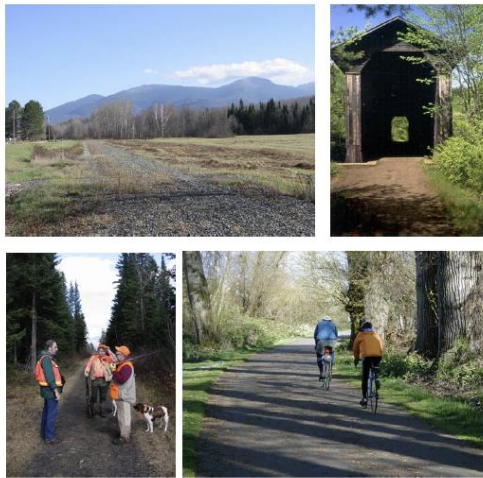


SOUTHWEST REGION PLANNING COMMISSION
37 ASHUELOT STREET
KEENE, NH 03465
(603) 357-0557
WWW.SWRPC.ORG

AGENDA

- I. Welcome & Introductions (10 minutes)
- II. Project Scope & Timeline (10 minutes)
- III. Your Vision (15 minutes)
- IV. Online Survey, Resources and Project Promotion (15 minutes)
- V. Next Meeting
- VI. Adjourn

PROJECT SCOPE & TIMELINE



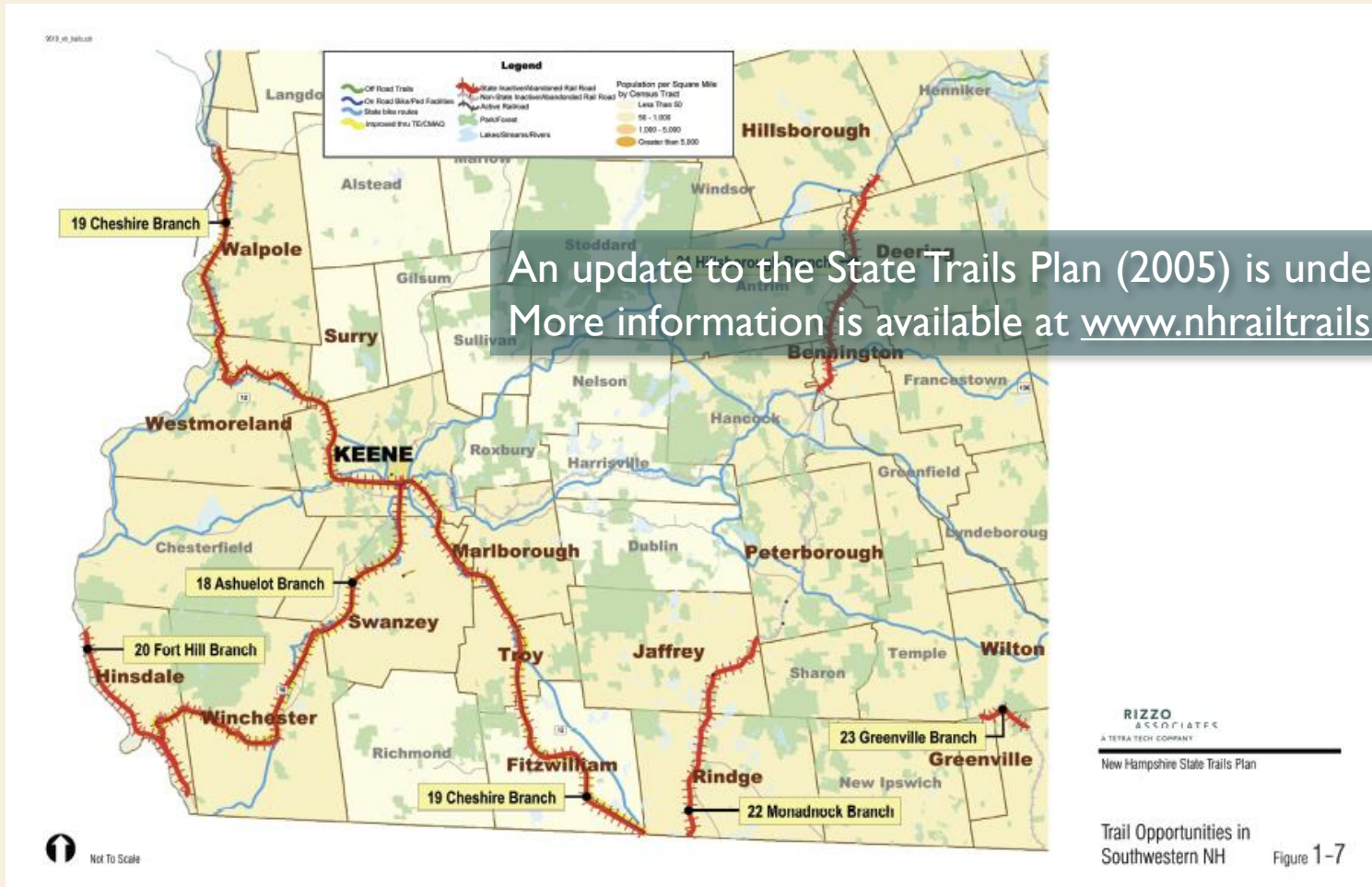
New Hampshire State Trails Plan

May 20, 2005
New Hampshire Department of Transportation

Prepared by:
Rizzo Associates
Alta Planning + Design

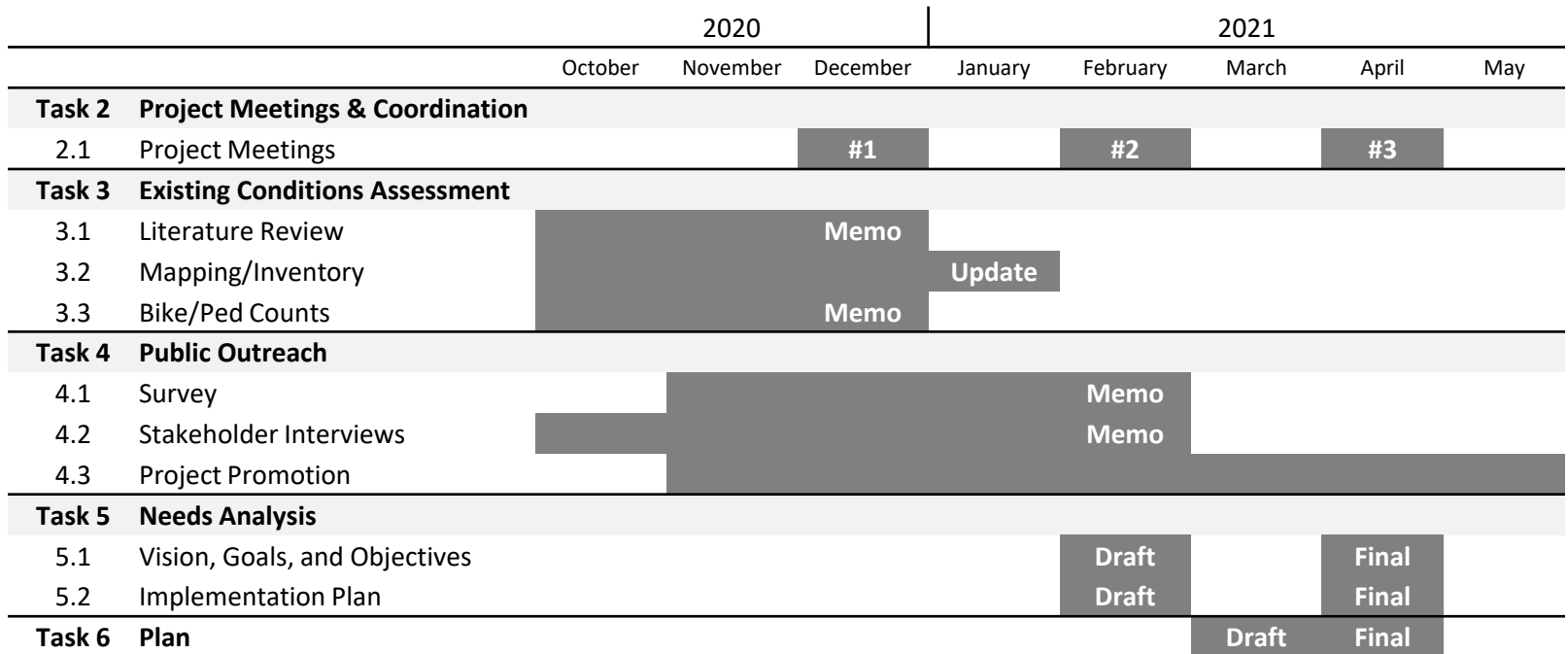


PROJECT SCOPE & TIMELINE



PROJECT SCOPE & TIMELINE

Task List and Approximate Timeline

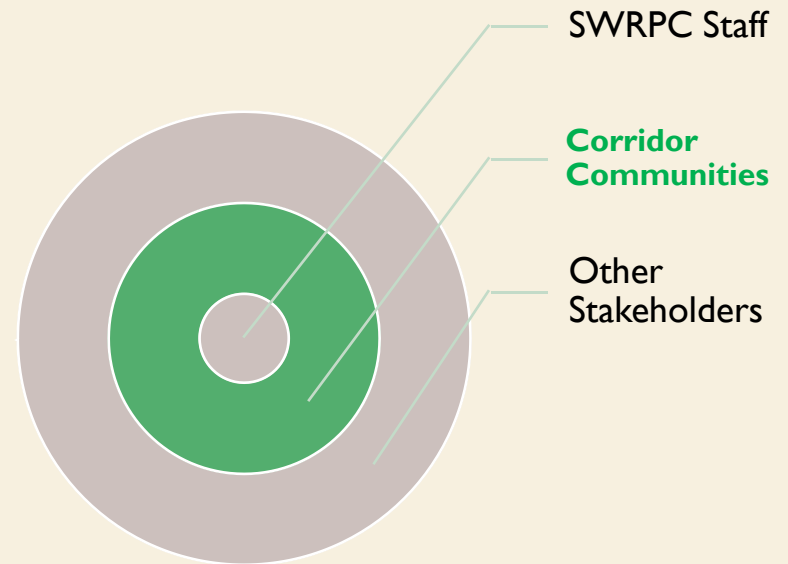


PROJECT WORKING GROUP

RESPONSIBILITIES

- Input on planned work tasks
- Liaising with larger community, constituency, institution, trail users
- Helping to identify plan goals and objectives
- Reviewing plans for public participation

MEMBERSHIP



TASK 2: PROJECT MEETINGS

Three proposed meetings convened on a periodic basis to learn about the trail, review task results and draft materials and help to craft a final plan.

1. Your vision, project scope, online survey, project promotion
2. Results of existing conditions assessment, draft goals and objectives, implementation plan
3. Final draft of plan, project prioritization, promotion and implementation next steps

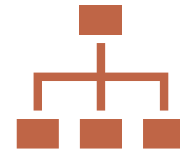
TASK 3: EXISTING CONDITIONS ASSESSMENT



A technical memo focused on the results of summertime **counts of people walking and biking** along the trail.



A map depicting recent **photos and trail condition ratings**.



A **literature review** of existing plans, reports, policies and other works that may influence the planning process.

TASK 4: PUBLIC OUTREACH

- **Online survey tool** to learn about specific issues, trip types, destinations, and other information from the general public.
- **Telephone/virtual interviews** with working group members and others to talk in more detail about their role, their experiences using the facility, and desired changes.
- SWRPC will develop a **project webpage** to host all relevant project information. The webpage will be updated with meeting materials, updates, survey links, etc.

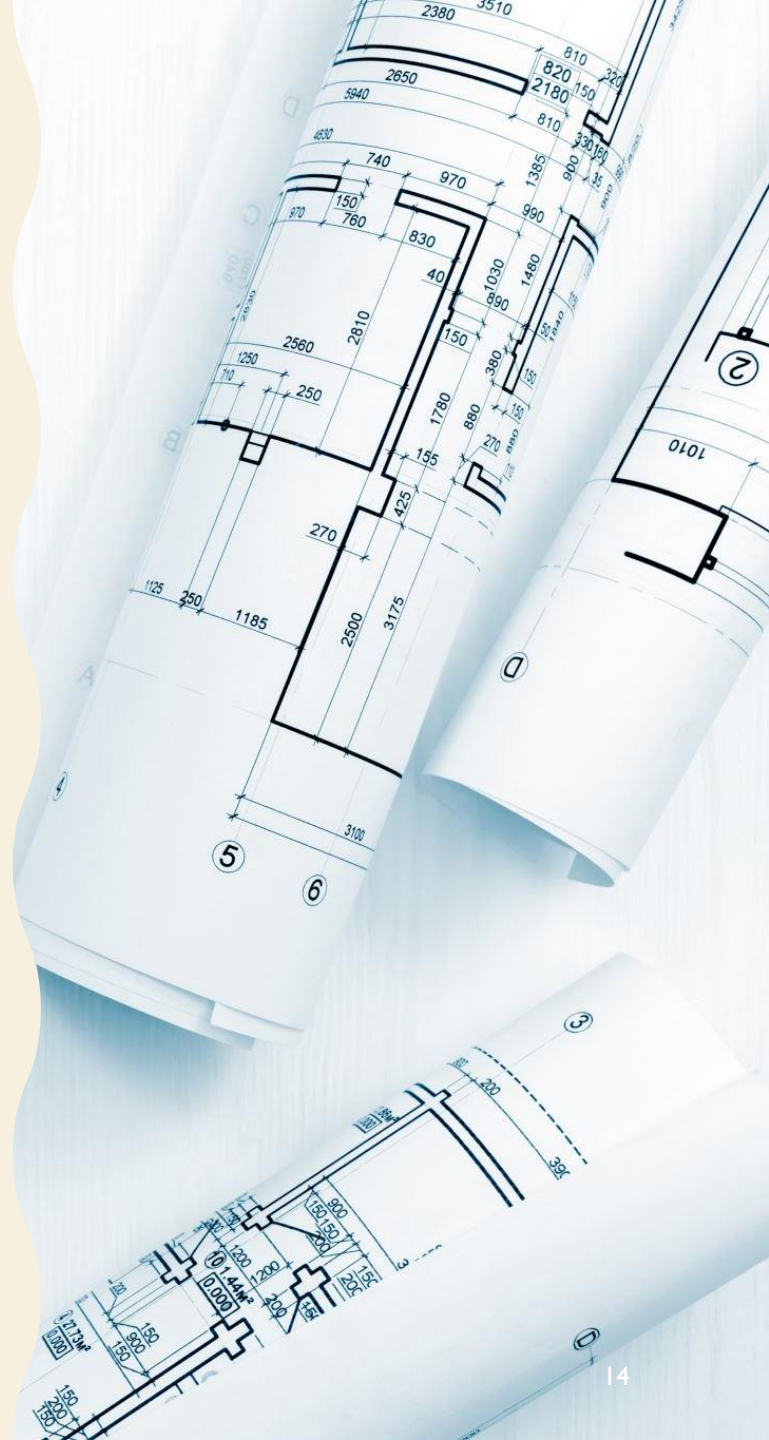


TASK 5: NEEDS ANALYSIS

- Based on prior tasks, SWRPC will develop a draft **vision, goals and objectives**.
- Project participants will itemize and prioritize trail tasks, projects, programs, policies, and actions (including education and outreach) in an **implementation plan** based on a schedule and feasibility.

TASK 6: PLAN

SWRPC will compile information from tasks above into a **Cheshire Rail Trail South Plan**. Other resources like design guidelines, potential funding resources, etc. will be linked at the project website.





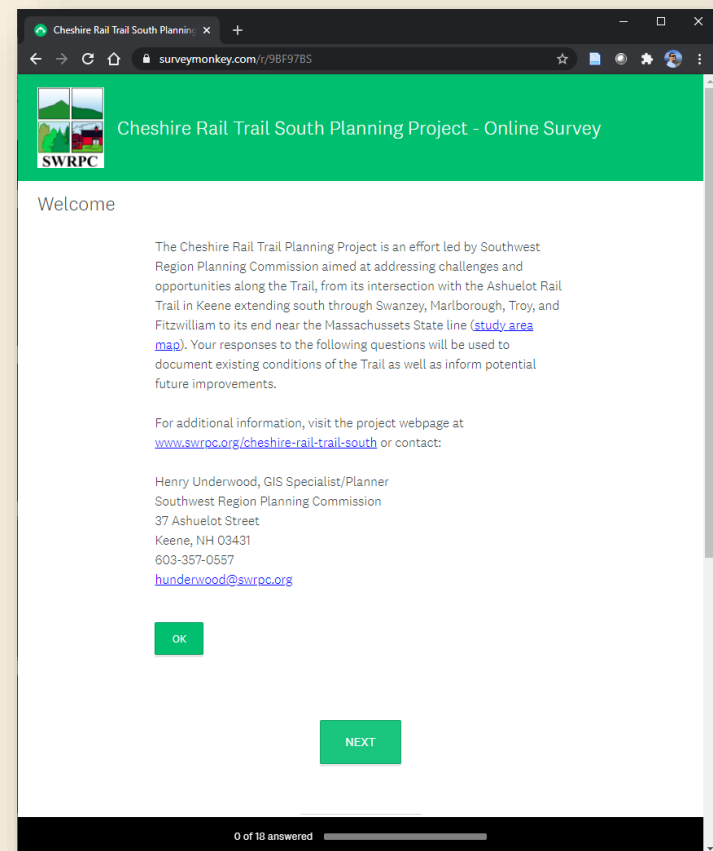
YOUR VISION

**WHAT ARE YOUR TOP GOALS RELATED
TO THE TRAIL (3 OR LESS)?**

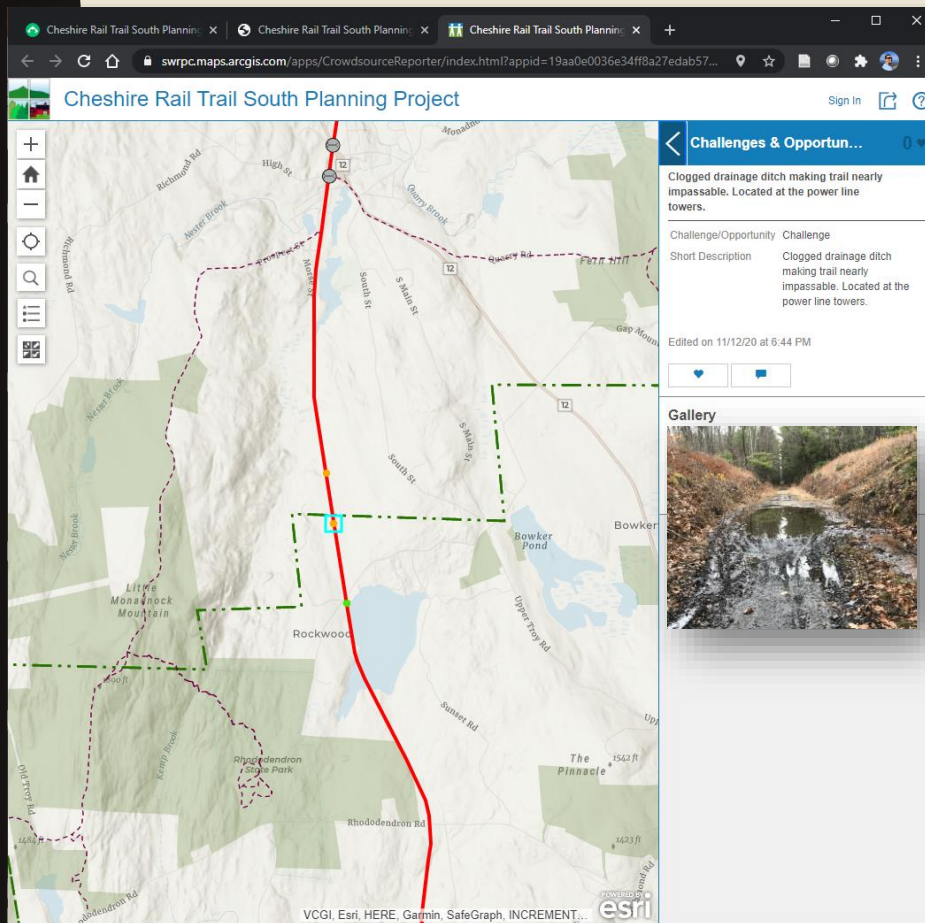
ONLINE SURVEY, RESOURCES AND PROJECT PROMOTION

ONLINE SURVEY

- Documents existing conditions, priorities, project ideas
- Includes questions about trip purpose, means of travel
- Mobile-friendly, only 7 minutes
- Open through January/February



ONLINE SURVEY, RESOURCES AND PROJECT PROMOTION



IDENTIFYING CHALLENGES & OPPORTUNITIES

- [Interactive map at the project webpage](#)
- Mark challenges & opportunities with a photo and description
- Like or comment on existing items
- Mobile-friendly

ONLINE SURVEY, RESOURCES AND PROJECT PROMOTION

PROJECT WEBPAGE

- Project overview
- Links to survey and interactive map
- Meeting details and materials
- Project Results
 - Literature Review
 - Bicycle/Pedestrian Counts
 - Online Survey
 - Stakeholder Interviews
 - Implementation Plan



ADJOURN



Henry Underwood

GIS Specialist/Planner

hunderwood@swrpc.org

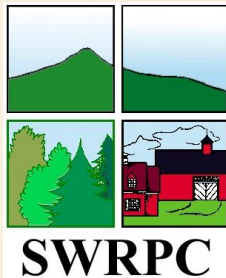


Todd Horner

Planner

thorner@swrpc.org

www.swrpc.org/cheshire-rail-trail-south



SOUTHWEST REGION PLANNING COMMISSION
37 ASHUELOT STREET
KEENE, NH 03465
(603) 357-0557
WWW.SWRPC.ORG