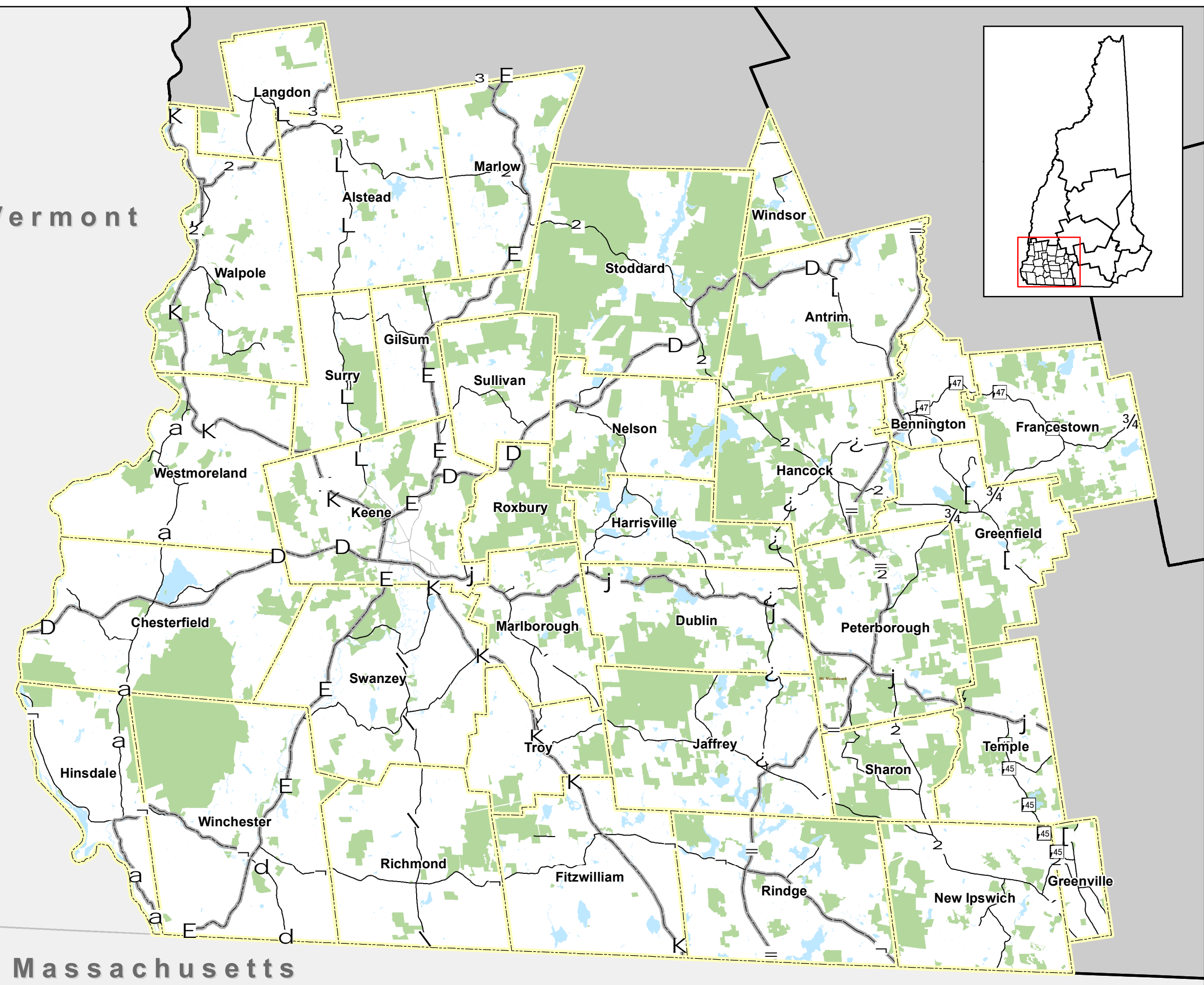


Vermont





Massachusetts




Southwest Region Planning Commission

Conservation Map

Boundaries & Features

-  Town
-  Planning Commission
-  Conservation
-  Water

Roads

-  Class I, State
-  Class II, State
-  Class IV, Municipal

The Basemap information is provided by UNH GRANIT and from the Southwest Regional Planning Commission GIS database.

