

**PLAN FOR
ASHUELOT RAIL
TRAIL**

A PILOT PROJECT

AGENDA

- Introductions
- Project Background
- Project Scope & Timeline
- Online Questionnaire
- Discussion
- Next Meeting (Late July)
- Adjourn

INTRODUCTIONS

Based on your affiliation, what are your interests related to the Ashuelot Rail Trail?

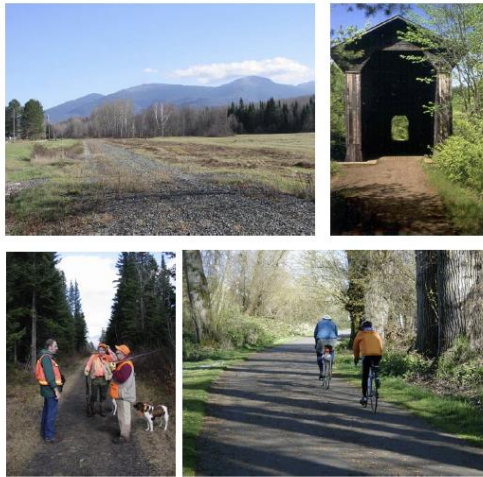
What are your thoughts and observations about the trail **today** and **in the future**?

BENEFITS OF TRAILS

- Health
- Transportation
- Environment
- Economy
- Identity



PROJECT BACKGROUND



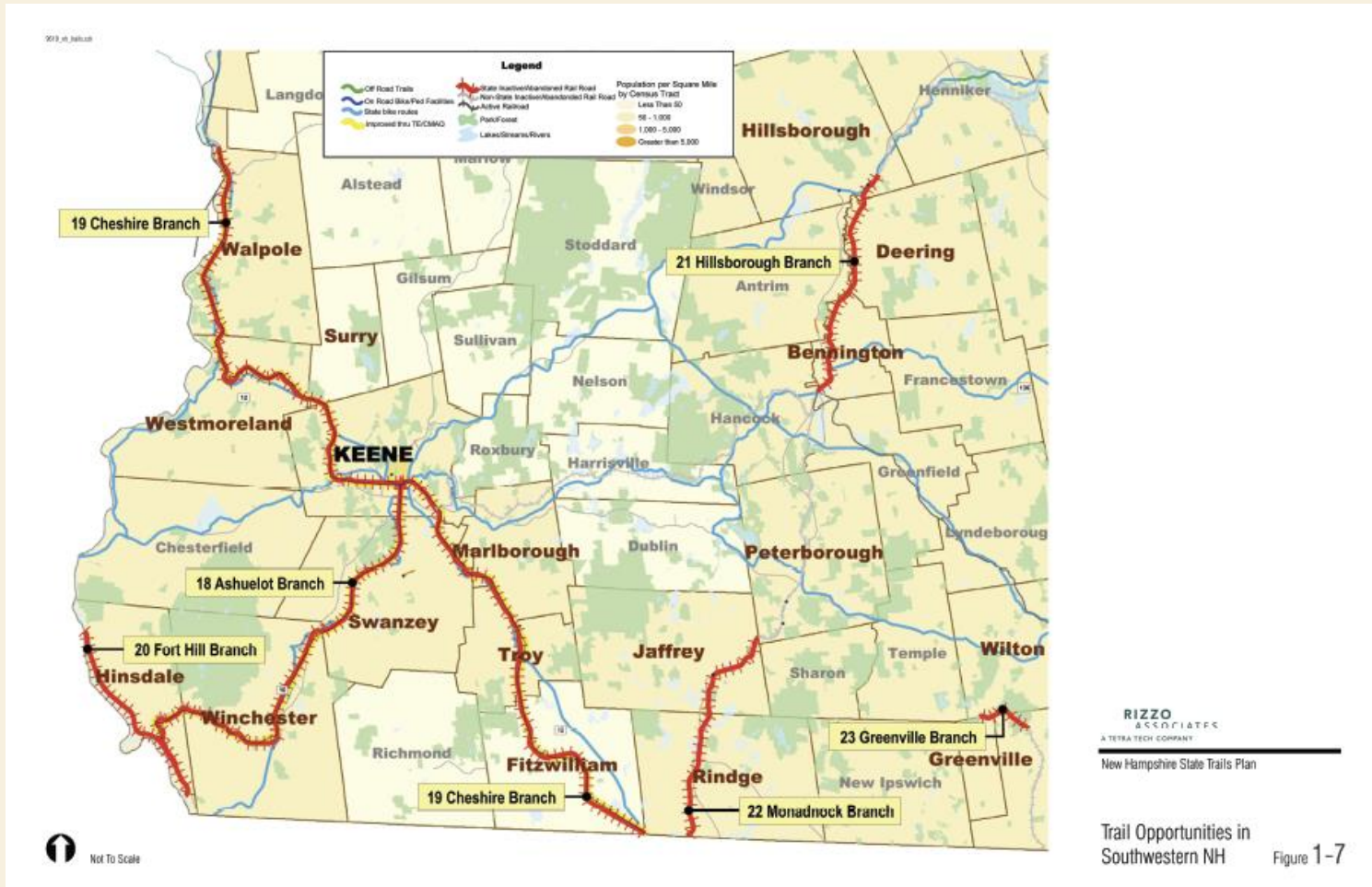
New Hampshire State Trails Plan

May 20, 2005
New Hampshire Department of Transportation

Prepared by:
Rizzo Associates
Alta Planning + Design



ASHUELOT RAIL TRAIL



RECENT IMPROVEMENTS

- \$1,537,000 bridge project over NH 101/NH 12 in Keene
- Roundhouse T – Phase II improvements in Keene
- \$104,000 project on 1.8 miles of trail from intersection with Sawyers Crossing Road to the power substation in Swanzey
- \$30,000 project (Ashuelot Rail Trail Corridor Phase III)

REGIONAL RAIL TRAIL PLANNING

- Monadnock Pathways & Trails Initiative
 - Antioch University New England (AUNE)/Antioch New England Institute (ANEI)
 - September 13, 2006 Southwest Regional Meeting
 - Brainstormed ideal trail qualities
 - Identified connections to other public trails
 - Listed potential improvements and concerns
 - Compiled potential resources

The transport system...

- will be managed to support and enhance the regional economy
- will be managed to help preserve and enhance natural, cultural, and historic resources
- will provide people of all ages and abilities timely access to goods, services, recreation, entertainment and companionship
- will be designed and managed to eliminate fatalities and injuries as well as provide reassurance to the traveling public that they are safe

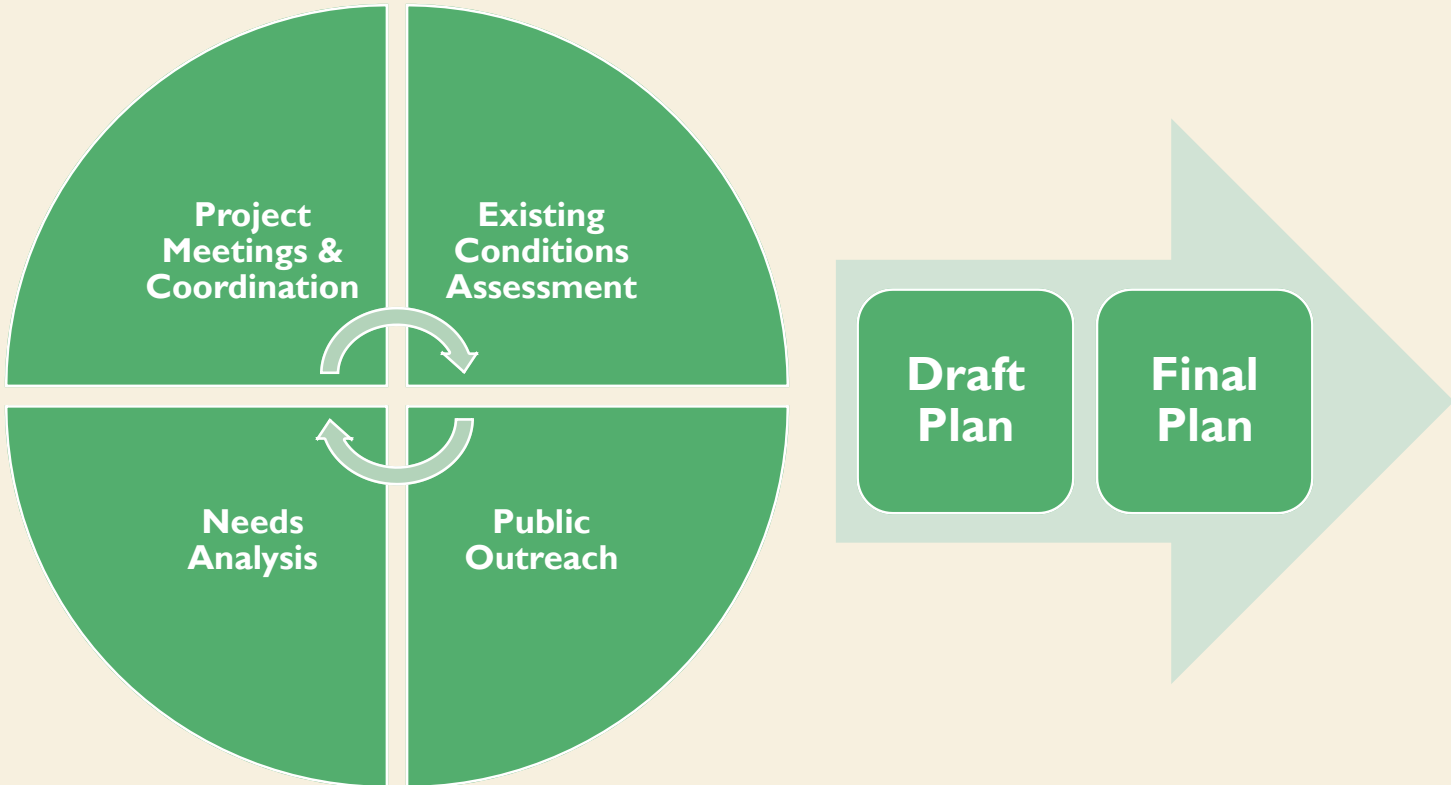
SOUTHWEST CONNECTS:

Southwest Region Transportation Plan 2014 - 2035



Adopted by the Southwest Region Planning Commission Board of Directors on January 13, 2015.

PROJECT SCOPE & TIMELINE



PROJECT ADVISORY COMMITTEE

Corridor Communities

- City of Keene
- Town of Swanzey
- Town of Winchester
- Town of Hinsdale

User Groups

- Pisgah Mountain Trail Riders
- New Hampshire Rail Trails Coalition

Natural Resources

- Ashuelot Local River Advisory Committee
- Monadnock Conservancy

Abutters

- Keene State College
- Eversource NH

Owners

- New Hampshire Department of Transportation
- New Hampshire Trails Bureau

Public Health

- Healthy Monadnock

Historic Resources

- Historical Society of Cheshire County

Recreation

- Pathways for Keene
- Monadnock Cycling Club

Education

- Antioch University New England

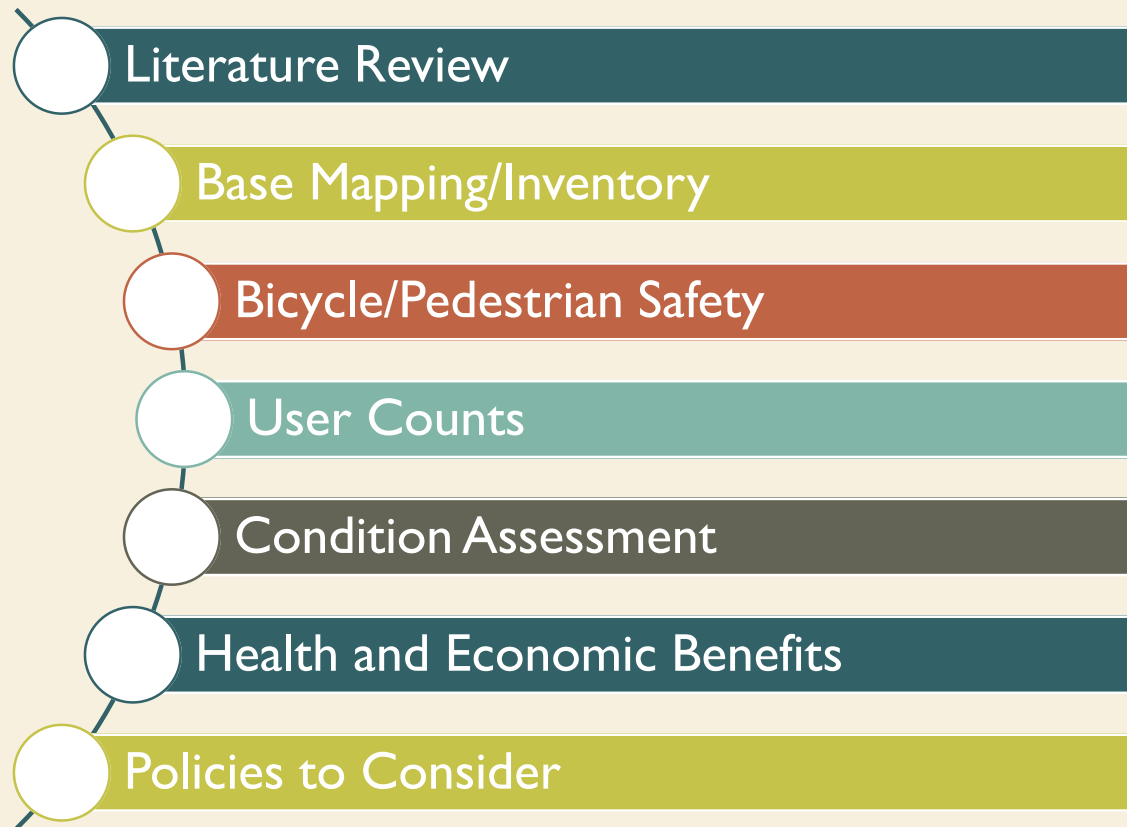
Economic Development

- Greater Keene Chamber of Commerce

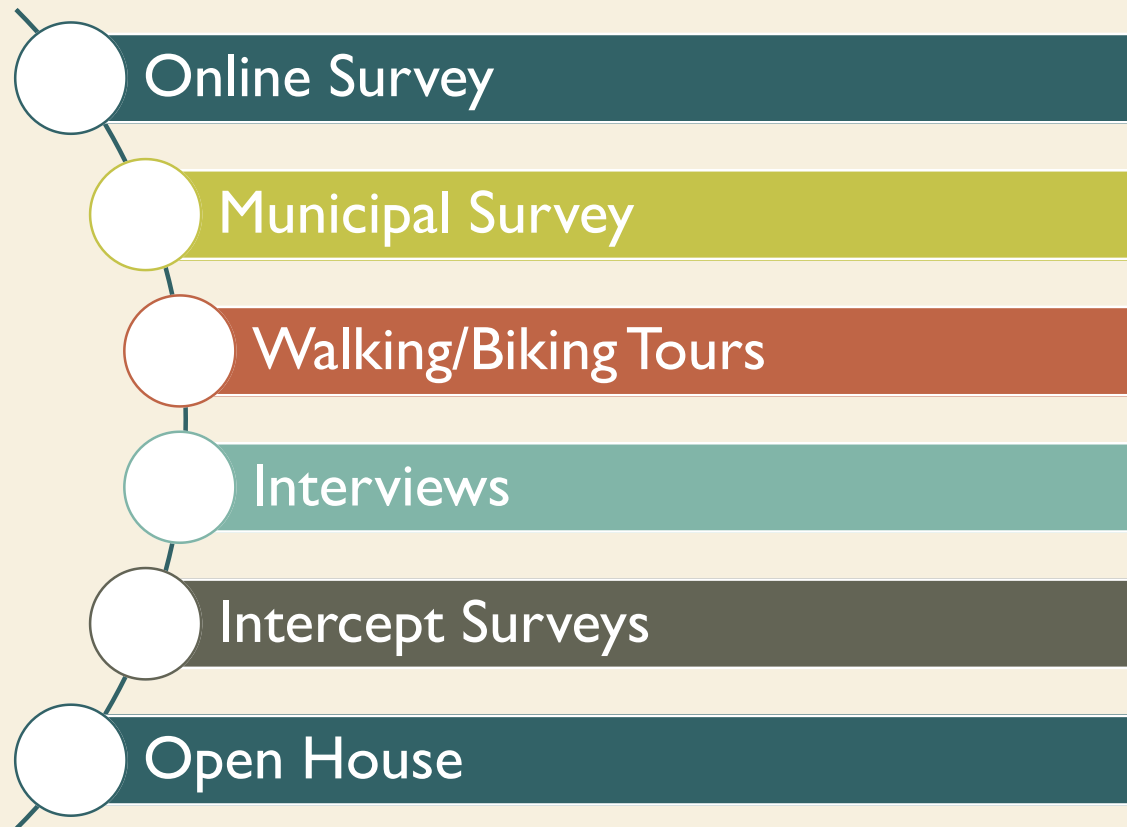
Neighboring Regions

- Franklin Region Council of Governments (MA)
- Windham Regional Commission (VT)

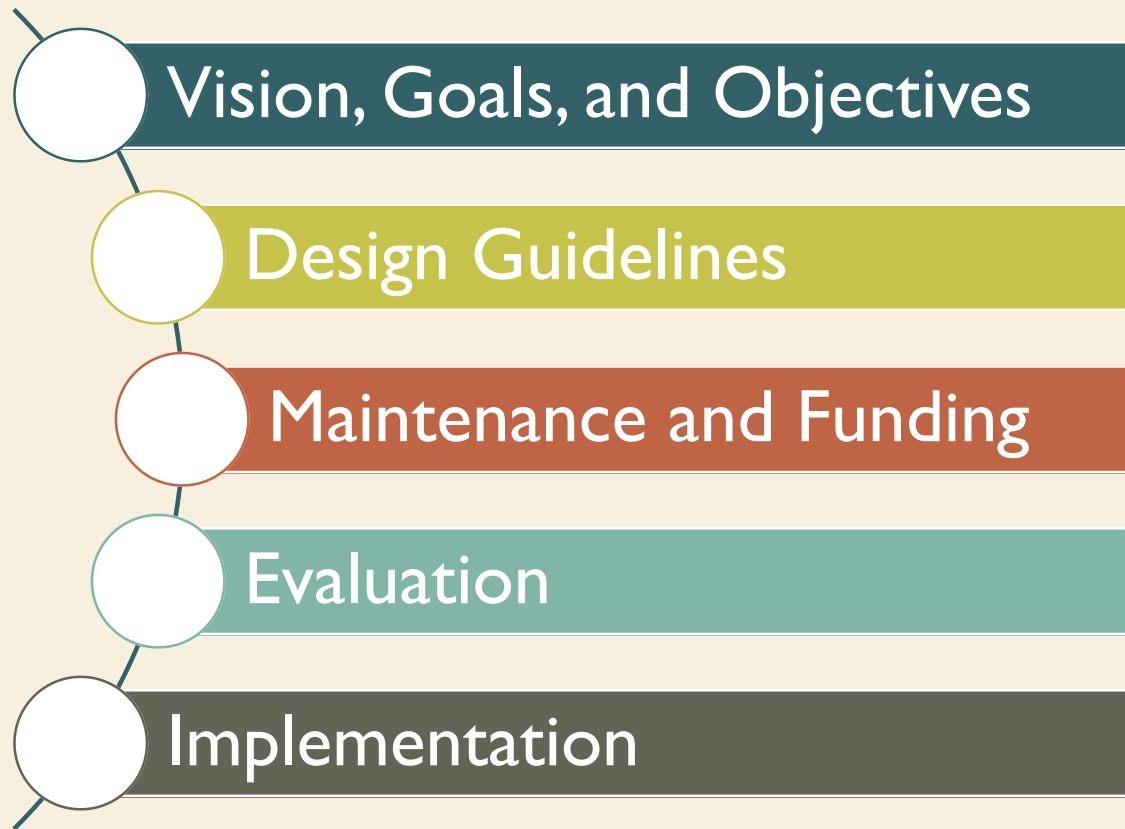
EXISTING CONDITIONS ASSESSMENT



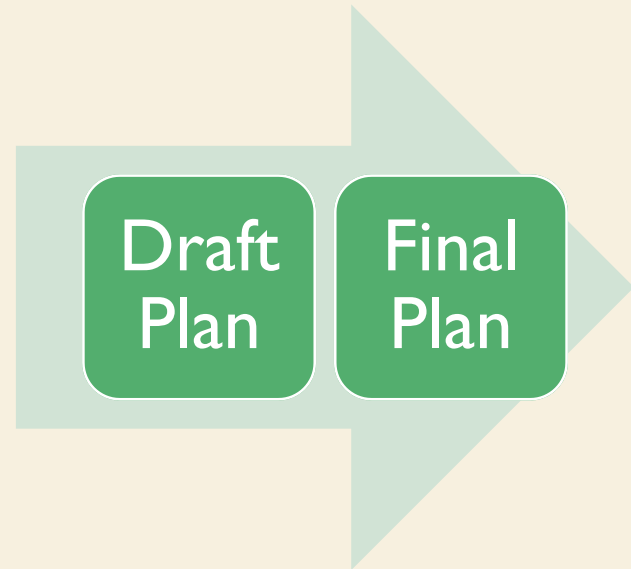
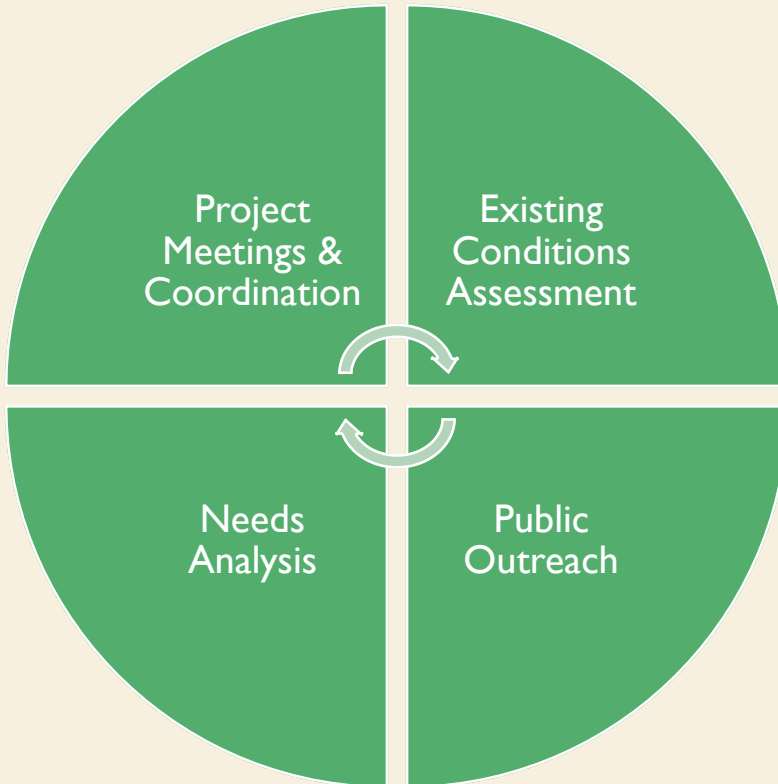
PUBLIC OUTREACH



NEEDS ANALYSIS



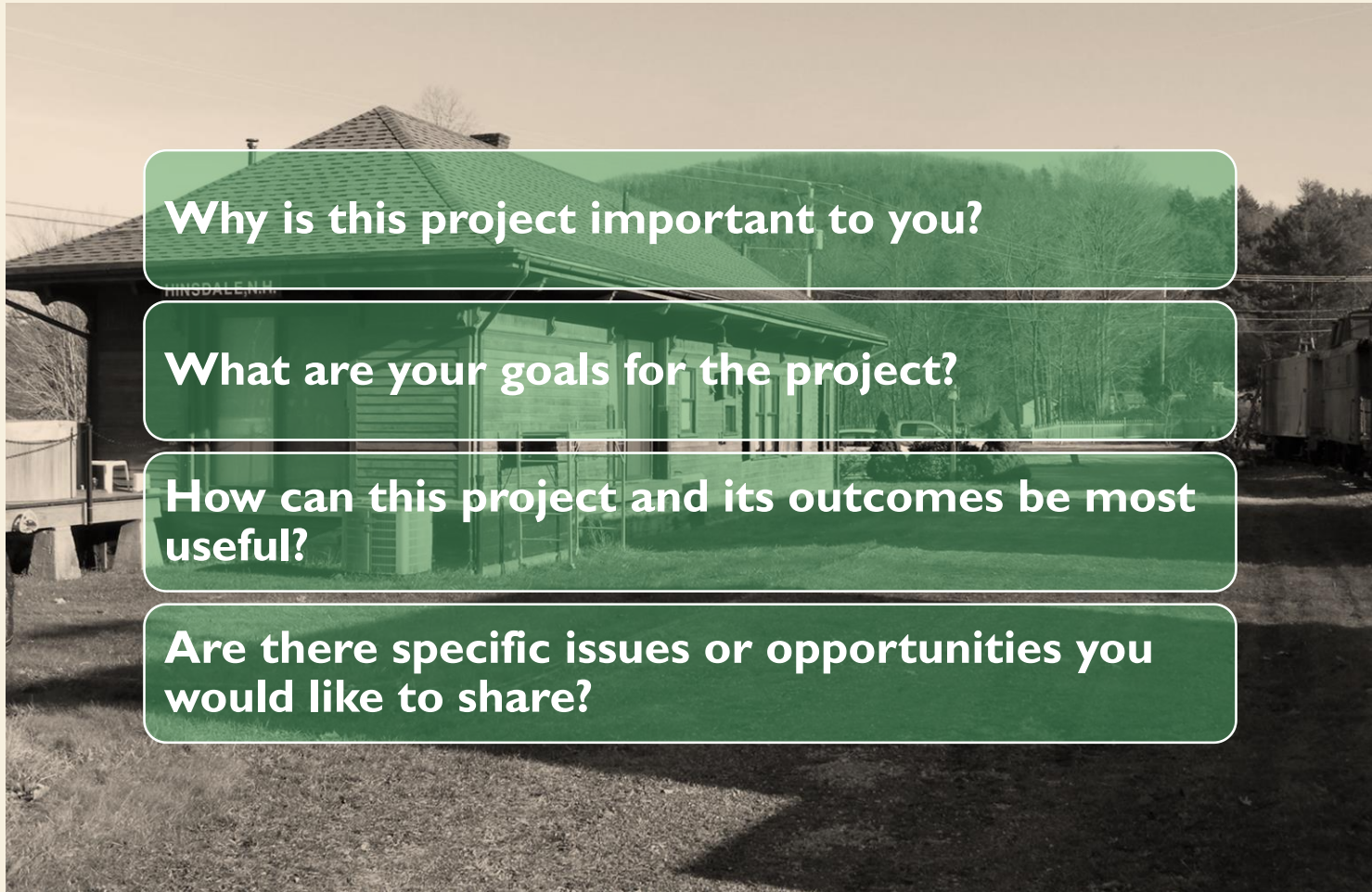
DRAFT & FINAL PLAN



DRAFT QUESTIONNAIRE

- Goals:
 - “Short and sweet”
 - Available online
 - Learn about users and concerns

DISCUSSION



NEXT MEETING

ADJOURN